

13 Lewin Circuit, Port Macquarie, NSW 2444

G.J. Gardner. HOMES

House For Sale

Friday, 5 July 2024

13 Lewin Circuit, Port Macquarie, NSW 2444

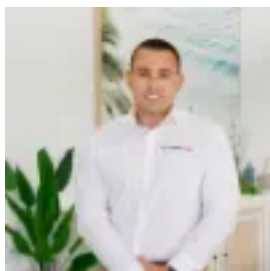
Bedrooms: 4

Bathrooms: 2

Parkings: 2

Area: 598 m2

Type: House



Sam Smith

0265331055

From \$830,382

Build your dream home today! Situated in the New Innes Park Estate, Lot 18 Lewin Circuit provides an opportunity for either an Investor or First Home Buyers to build their dream home! For more information regarding this house & land package, contact Sam Smith on 0447 970 971 or email sam.smith@gjgardner.com.au. Innes Park Estate is a carefully planned, well-appointed estate within a short drive of the Lake Innes shopping Centre, schools, and Port Macquarie Base Hospital. A 10-minute drive leads into the CBD and pristine beaches of Port Macquarie. This delightful yet compact home is designed to make maximum use of space and suit investors, first home buyers and those looking to downsize. Allow yourself to imagine the lifestyle you've always wanted; in the home you deserve! The Nova design offers individually crafted facades that will inspire you by providing a choice of homes that reflect your personal lifestyle and preferences. For optimal site use, this design is best positioned on sites with the north aspect towards the side of the home, providing sustainable and comfortable living conditions throughout the year. NOTE: This price includes the Classic Facade with no allowance for site costs or Beach Facade.