

13 Yating Avenue, Schofields, NSW 2762

House For Sale

Saturday, 29 June 2024

13 Yating Avenue, Schofields, NSW 2762

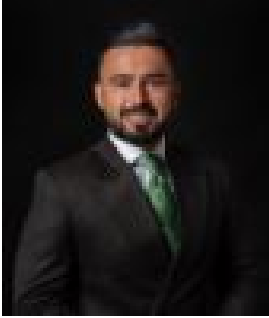
Bedrooms: 5

Bathrooms: 3

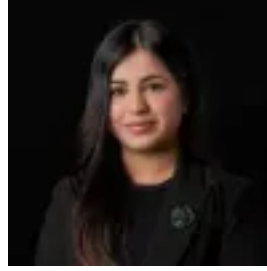
Parkings: 2

Area: 467 m2

Type: House



Amit Kumar
0288964336



Siya Sachdeva
0288964336

Price Guide \$1,200,000

Nestled in the heart of Schofields also known as Tallawong, this meticulously crafted double-storey home epitomises modern family living. Located in one of the most sought-after neighbourhoods, you'll be surrounded by essential amenities, schools, lush parks, and convenient transport options, creating an enviable lifestyle for you and your family. The home is situated on a premium 467 sqm land size and presents the potential to add a Pool for the family or Granny Flat (S.T.C.A.) Step inside and be greeted by the expansive open-plan layout area that seamlessly integrates the kitchen, dining, and living spaces. This bright and airy room, filled with natural light from large windows, sets the stage for both relaxed family gatherings and sophisticated entertaining. The living area extends through glass sliding doors to the undercover alfresco space and a landscaped backyard, offering a perfect indoor-outdoor living experience. The kitchen is the true centerpiece of this home, designed to meet the needs of the most discerning chef. It features quality stainless steel appliances, including a four-burner gas cooktop and oven. The elegant stone benchtops provide ample preparation space, while the eat-in breakfast bar is ideal for casual meals. Tiled splashbacks add a touch of sophistication, and the abundant cabinetry ensures that all your storage needs are met. The accommodation is thoughtfully laid out to provide maximum comfort and privacy. The home includes five spacious bedrooms. The master suite is a private retreat, complete with a walk-in wardrobe and a private ensuite bathroom, featuring modern fixtures and finishes. The other bedrooms also feature built-in robes, offering plenty of storage. Additionally, there is a bedroom and a full bathroom downstairs ideal for intergenerational living or guest accommodation. Features you will love:- Ideal 467 sqm land size with potential to add a Pool or Granny Flat- LED downlights- Ducted air conditioning- Versatile layout with a bedroom and a full bathroom downstairs- Quality flooring downstairs that combines elegance and durability- Rumpus room upstairs- Undercover alfresco and spacious backyard- Remote-controlled, double lock-up garage with internal access- Striking street appeal - Low maintenance front and back yard Location highlights:- Beautiful Tallawong Location - 5-minute drive to Tallawong Metro Station- 5-minute drive to Schofields Train Station and Schofields Village- 10-minute walk to Schofields Public School- 9-minute drive to Rouse Hill Town Centre- Short distance to local daycare centres- Short distance to the local park Disclaimer: All information contained herein is obtained from property owners or third-party sources which we believe are reliable. We have no reason to doubt its accuracy, however, we cannot guarantee it. All interested person/s should rely on their enquiries.