

**14 Harvey Street, Mosman Park, WA 6012**

**BELLCOURT.**

**House For Sale**

Monday, 1 July 2024

14 Harvey Street, Mosman Park, WA 6012

**Bedrooms: 4**

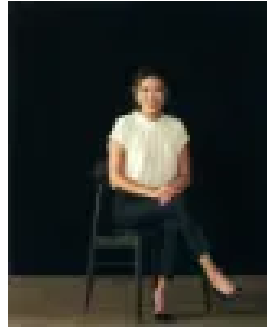
**Bathrooms: 3**

**Parkings: 2**

**Type: House**



Kirk Bellerby  
0400511007



Phoebe Shi  
0864787811

## Expressions of Interest

Expressions of Interest - All offers presented Wednesday, 17th July 2024 at 4pm. It's with great pleasure to present to the market this BRAND NEW Architecturally designed residence in one of the most tightly held pockets of Mosman Park. Every meticulous detail has been thought of during design and construction ensuring quality, comfort and convenience. Ground Floor- Guest or Master bedroom with ensuite- Stunning kitchen with phenomenal shelving and storage plus scullery- The 'showstopper' is the kitchen bench top which is a beautiful Royal Green quartzite from Brazil - Integrated Fridge and freezer with Australian Made walnut handles- Smeg Oven and Combi steam oven - Smeg 900mm induction- The sunken lounge has a gas fireplace and built-in TV and hidden storage behind feature cabinetry- Concrete ceilings are a great raw contrast to the soft palettes of greens and timber features used throughout. - Large commercial slider doors open on to north facing landscaped gardens and seating zones- Laundry- Remote double lock up garage First Floor- Large second living area which has a large bench seating and storage under this huge window overlooking tree tops. - Secondary bedrooms are all large with built in robes- Main bathroom with free standing bath- Separate W/C- Master bedroom has a large ensuite and opens on to a private north facing balcony- Master bedroom with study nook Features- Fans in every room- Reverse cycle and zoned A/C- Reticulated gardens- Engineered Oak timber floors throughout- All the lighting is Australian Made- All the tiles are hand made in Japan- Green title- Outdoor lock up storage Location- Blue chip pocket on the Peppermint Grove border- Walk to Gill Street Cafe- Walk to the River- 5 minutes to Cottesloe Beach- Walk to IGA Local Grocer Developer: Fabric Property Architect: Studio Loci Landscaping: Concept Origin