

14 Magenta Close, Thornlie, WA 6108

House For Sale

Sunday, 23 June 2024



14 Magenta Close, Thornlie, WA 6108

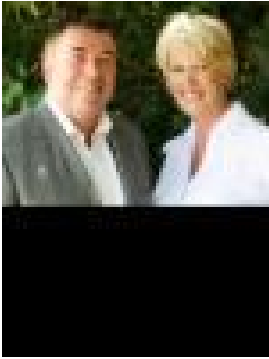
Bedrooms: 4

Bathrooms: 2

Parkings: 2

Area: 1023 m2

Type: House



Tracey Foster
0893972525

Offers From \$799,000

This family home set in a quiet cul-de-sac is situated on a large 1023m² Block. Under the new town planning scheme this property will offer subdivision potential in the future. Zoned R17.5/R20. Features: 4 Large Bedrooms all with Built in Robes. 2 Bathrooms. Formal Lounge room with Study nook. Open plan meals, family and kitchen. High Ceilings throughout. Double Lockup Garage. Ducted Reverse Cycle Air-Conditioning. Bore Reticulation. Assorted Fruit Trees. Large Entertaining Patio with pull down cafe's blinds. Free standing Gas stove plus wall oven. Dual Side access to the rear. For commuters, Thornlie station is a mere five minutes' drive, Additionally the future development of the Metronet Thornlie-Cockburn Link promises enhanced connectivity and accessibility for residents. Enjoy the convenience of Carousel Shopping Mall just a 10-minute drive away, while the CBD is easily accessible within 30 minutes. Whether you're seeking a comfortable family home or an astute investment opportunity make sure you view this one.