

14 Messenger Road, Leppington, NSW 2179

House For Sale

Wednesday, 19 June 2024



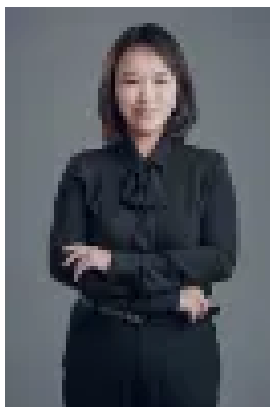
14 Messenger Road, Leppington, NSW 2179

Bedrooms: 4

Bathrooms: 2

Parkings: 2

Type: House



Robyn (Lingyun) Bao
0449078721

Just Listed | Contact Agent

Nestled in the family-friendly suburb of Leppington, this near new two-storey home boasts serene views of Leppington Oval just moments away. Surrounded by nature reserves and farmlands, yet conveniently close to local amenities and major commuting routes to Liverpool, Parramatta, and Sydney, this location offers tranquility with urban convenience. The modern facade features a blend of brown brickwork, light neutral materials, and a sleek black roof. A well-maintained driveway leads to a remote-controlled double garage with internal access, complemented by a welcoming front porch. Inside, the home offers:- A spacious, sunlit lounge with green vistas upon entry.- An open-plan living, dining, and kitchen area flooded with natural light, boasting attractive tiling, floating timber floors, and rear garden views.- A sliding door opens onto a covered patio, ideal for family gatherings and BBQs.- The contemporary kitchen is highlighted by an expansive window instead of a traditional splashback, illuminating the Caesarstone benchtops and gourmet appliances, including a wide gas cooktop, oven, and stainless-steel canopy rangehood. Additional features include a double undermount sink, island breakfast bar, and ample storage space.- Four carpeted bedrooms, all generously sized with built-in robes.- The master bedroom includes a walk-in robe and an elegant ensuite featuring a spacious hobless shower with semi-frameless glazing and a recessed shelf.- A large main bathroom with quality fixtures, including a bath and separate shower.- Additional amenities: Fully ducted air conditioning throughout and a separate laundry. This home is conveniently located near:- Willowdale Shopping Centre with Coles and medical clinic (1.2 km),- Emerald Hills Shopping Village with Woolworths and Aldi (4.3 km),- Square Shopping Centre with Event Cinemas (7 km),- Glenquarie Town Centre with Target (12.9 km). Schools in proximity include Leppington Public School (1.7 km), John Edmondson High School (5.7 km), and walking distance (400 m) to Leppington Anglican College. This property epitomizes modern living, convenience, and natural beauty, presenting an ideal choice for families seeking comfort and style in Leppington.