

14 Palmerston Place, Coomera, Qld 4209



House For Sale

Sunday, 23 June 2024

14 Palmerston Place, Coomera, Qld 4209

Bedrooms: 4

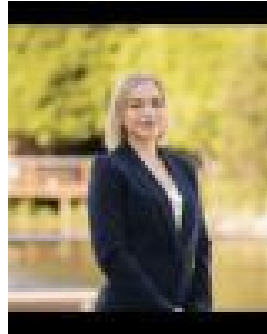
Bathrooms: 2

Parkings: 2

Type: House



Simon Finlayson
0756211507



Sydney Johnson
0424885527

JUST LISTED!

Discover the epitome of modern living in this stunning 4 bedroom, 2 bathroom double storey home nestled in the prestigious Genesis Estate. This beautiful residence offers a blend of contemporary design and functional space, perfect for families seeking comfort and style. Step inside to be greeted by a well appointed kitchen that seamlessly overlooks the dining and living areas, creating an inviting open plan layout. The expansive living space flows effortlessly to an undercover alfresco area, perfect for entertaining guests or enjoying a peaceful evening outdoors. The ground floor also features a convenient powder room and a secure double lock up garage, ensuring both comfort and practicality. Ascend the stairs to find a thoughtful study nook, ideal for work or study from home. The upper level boasts four generously sized, carpeted bedrooms. The master suite is a private retreat, complete with split system air conditioning, a walk in robe, and a luxurious ensuite. The remaining three bedrooms are equipped with built in robes, providing ample storage for all family members. Ceiling fans are installed throughout the home, ensuring year round comfort. Located in the esteemed Genesis Estate, residents benefit from an onsite clubhouse with gymnasium, cinema, pool, business centre and BBQs. Community parks, playgrounds and the Coomera River are also close by, or meander the 6kms of walking trails within the estate. Westfield Coomera is 7 minutes by car, or stock up on supplies at nearby Coomera East or Red Edge shopping centres. Well regarded private and public schools are within easy reach, plus access to the Motorway quickly, making travel to Brisbane or the southern Gold Coast a breeze.

Features Include:

- Spacious master suite with walk in robe, aircon, ensuite with stone vanity and shower
- Three additional bedrooms with built in robes and ceiling fans
- Modern kitchen with stone benchtops & electric cooking
- Open plan family and dining area, flows freely to the outdoors
- Upstairs study nook
- Main bathroom with stone vanity, shower, bath and separate toilet
- Expansive alfresco area, overlooking a manicured and private backyard
- 5.4kW Solar System with 16 Panels
- Supremely central location, 5km from Westfield Coomera and close to schools
- Easy access to public transport, internationally renowned theme parks and the M1 Pacific Motorway
- Approx. 20 minutes to Gold Coast beaches, with multiple Coomera River boat ramps nearby
- Resident access to Genesis Estate clubhouse with gym, cinema, business centre, pool and BBQ area
- Genesis Estate 24-hour onsite & roaming security
- Council Rates are approximately \$2,000 per annum
- Water Rates are approximately \$1,500 per annum
- Body Corporate Fees are approximately \$34 per week
- Estimated Rental Potential of \$720 - \$750 per week

Don't miss the opportunity to make this exceptional property your new family home. Contact us today to arrange a viewing and experience the true essence of elegant living. Why do people love living in Coomera? A charming suburb in the Gold Coast, Queensland that offers a delightful mix of urban comforts and natural beauty. It's home to the bustling Westfield Coomera shopping centre, diverse restaurants, and cosy cafes. Nature lovers can explore Coomera Waters and Coomera Regional Park, while thrill-seekers enjoy nearby theme parks like Dreamworld and Movie World. With its blend of amenities and attractions, Coomera has something for everyone to love. For all of your home loan needs, please contact our friendly broker, Conrad Palmer on 0410 296 050. Important: Whilst every care is taken in the preparation of the information contained in this marketing, Ray White will not be held liable for the errors in typing or information. All information is considered correct at the time of printing.