

**15 Tamarisk Way, Drewvale, Qld 4116**

Place. 

**House For Sale**

Thursday, 16 May 2024

15 Tamarisk Way, Drewvale, Qld 4116

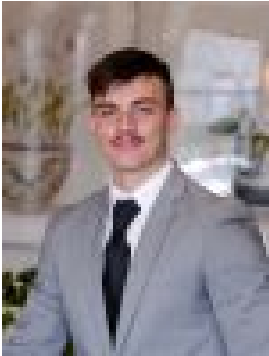
**Bedrooms: 4**

**Bathrooms: 2**

**Parkings: 3**

**Area: 773 m2**

**Type: House**



Mackenzie Berg  
0466569855



Ginnie Nahar  
0731938788

## Auction

Auction Location: On-site With Stretton State College, Parks, the Aldi Shopping Precinct and transport links with express buses all at your fingertips, this Drewvale home promises the life of comfort and convenience you've been craving. The spacious floorplan is ready for busy family life while the good-size lot and prime location, with easy access to the CBD, make this an exciting opportunity that will impress a variety of buyers. Modern appliances and an abundance of bench space are sure to delight the avid cook in the kitchen with an open design that's ideal for entertaining. Your living spaces will feel open and light-filled and there's also split system air-conditioning and ceiling fans for added comfort. You can take your pick from four good-size bedrooms and two bathrooms including the private and well-appointed master suite and a study nook. Cable TV, security screens and parking for up to three cars add to the long list of features and there's even a large covered entertaining area along with a swimming pool and a selection of eco-friendly inclusions. - Family-friendly living so close to schools, shops and parks- A spacious 4-bedroom, 2-bathroom with a study nook floorplan awaits- Light-filled living and a covered alfresco with roller blinds fully enclosing the outdoor entertainment area for entertaining- An electric stove, oven, rangehood and dishwasher in the kitchen- Cable TV, split system air-conditioning and ceiling fans- Window and door security screens plus window locks- A rainwater tank, solar electricity and a solar hot water system- Enjoy a spa, a good-size fenced yard and a swimming pool- Established gardens, side fencing, lush lawn and mature trees- Within the catchment of the esteemed Stretton State College which is only a short few minutes away- You'll be less than 30 minutes (approx.) from the Brisbane CBD- Minutes away from the Aldi Shopping precinct- Storage Space for a Boat or Pop-Top Caravan- Includes a spacious outdoor shed for additional storage and projects.- A short distance from the Logan Motorway & Gateway which can take you to the Gold Coast, Brisbane Airport or Ipswich City in Approximately 30 Minutes- Located 3 Minutes from the Parkinson Aquatic centre which is also appointed with cutting edge Gym facilities

Disclaimer: All information contained herein is gathered from sources we consider to be reliable however we cannot guarantee or give any warranty about the information provided and interested parties must solely rely on their own enquiries. If the property is being sold by auction or without a price and therefore a price guide can not be provided. The website may have filtered the property into a price bracket for website functionality purposes.