

155 Sutherland Street, Paddington, NSW 2021

Terrace For Sale

Tuesday, 4 June 2024



155 Sutherland Street, Paddington, NSW 2021

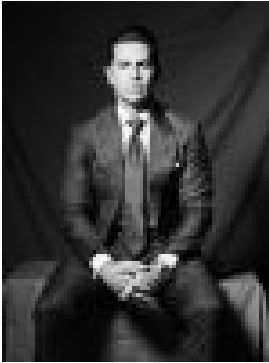
Bedrooms: 3

Bathrooms: 1

Parkings: 1

Area: 133 m2

Type: Terrace



Maclay Longhurst
0283556783

Buyers guide \$3,300,000

A private haven hidden high above the street, this classic terrace is cleverly modernised to bring sunshine and natural light into both levels featuring 2 living areas and seamless flow to a landscaped alfresco courtyard with off-street parking and level access to Hargrave Lane. Capturing leafy streetscape vistas from the main bedroom with sunlit NE balcony, the home enjoys a peaceful setting at the Woollahra end of a prized tree-lined address just around the corner from Flat White café, 500m to Queen Street village and 800m to Edgecliff train station.* Living area with fireplace, dining area* Family area opens to garden courtyard* Smeg gas kitchen, integrated dishwasher* Main bedroom with b/ins and balcony* 2nd bedroom with b/ins and balcony* 3rd bedroom or study with b/in shelves * Bathroom with bath & separate shower* Powder room with concealed laundry* Attic storage with pull-down ladder* High ceilings, skylights, generous storage* Pale Tasmanian oak parquet flooring * Courtyard with auto-gates and parking* Dual street frontages, sunny NE aspect* Electric vehicle charging station in street* Walk to cafes, Trumper Park & Queen St