

# 16 Endeavour Drive Bellingen, Bellingen, NSW 2454

cardow+partners

## House For Sale

Thursday, 4 July 2024

16 Endeavour Drive Bellingen, Bellingen, NSW 2454

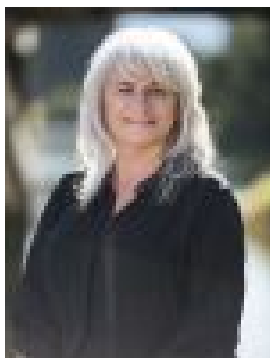
Bedrooms: 3

Bathrooms: 2

Parkings: 2

Area: 5035 m2

Type: House



Suzanne Atkinson  
0266551049

**\$1.5m**

This home is in a tranquil setting with breathtaking mountain views and well-maintained gardens attracting bees, butterflies, and a variety of bird species, all fostering a calm and peaceful atmosphere. The interior boasts an open-plan design that seamlessly integrates the kitchen with stone benchtops, ample cupboard space, and a triple-aspect dining and lounge room leading to an outdoor alfresco entertaining area. The spacious sitting room with study offers views of the garden and beyond to the mountains, a perfect place to read the paper and enjoy your morning coffee. The property includes three generously sized bedrooms, two with built-in wardrobes, and a master bedroom with a walk-in wardrobe and an ensuite bathroom, plus a renovated full bathroom. The property features a sparkling in-ground saltwater pool next to a large undercover entertaining area - a perfect spot for BBQs with family and friends in all seasons. Additional features include a brand-new roof with new guttering and downpipes, a double remote garage with internal access, under-house storage, a Purtec volumetric water softening filter for the whole house, solar panels, solar hot water and a fenced yard. The property also has DA approval to build a granny flat (plans are available on request) and the potential for future subdivision, subject to council approval. It's a 12-minute walk to Bellingin's vibrant town centre; a 10 to 15-minute drive east to beautiful, deserted beaches and the stunning coastline; a drive west along Waterfall Way, the winding mountain road goes through magnificent rainforests and passes pretty waterfalls on the way to the Dorrigo Plateau. This is a rare opportunity to acquire a substantial 5,035sq.m property in town, featuring a practical single-level home with development potential.