

# 17 Albert Drive, Killara, NSW, 2071

STONE

## House For Sale

Friday, 30 August 2024

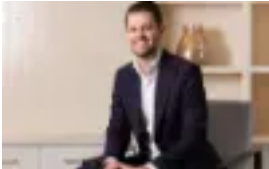
17 Albert Drive, Killara, NSW, 2071

**Bedrooms: 6**

**Bathrooms: 6**

**Parkings: 4**

**Type: House**



Matt Payne

0290953500

## Smart tech multi-gen impresses with incredible space and family luxury

A statement of flawless contemporary design, this substantial north to rear home showcases vast indoor living and open entertaining areas over three expansive levels. Nothing has been overlooked in the pursuit of premium comfort, enduring quality, and smart-home functionality. The home enjoys a family-sized Miele kitchen, and three substantial living areas including a fully fitted home cinema. Brimming with multi-gen appeal, bedrooms and bathrooms feature throughout, offering individual space with supreme versatility. Perfect for entertaining on a legendary scale the fluent in-out design connects to party terraces and a sparkling swimming pool. A must-see to truly appreciate.

- Set on 1005sqm approx. of north to rear land opposite St Crispens Green
- 602sqm approx. layout across three finely appointed and versatile levels
- C-Bus smart home automation for comfort, entertainment, and security
- Grand sense of arrival, impressive street front and entry hall, home office
- Living and dining with sleek gas fireplace and open flow to covered terrace
- Stone and gas kitchen, all Miele appliances, Zip tap, walk-in pantry, island
- Downstairs rumpus opens to poolside entertaining and child-friendly garden
- Full home cinema for an amazing family experience, wine cellar, gym
- Six or seven bedrooms as yours needs dictate, all centred on bathrooms
- Palatial master with dressing room, full luxury ensuite, and balcony
- Six bathrooms all fully tiled and luxuriously designed, multiple ensuites
- Refreshing resort-size swimming pool and spa in the private garden
- Double lock up garage, internal access, auto gate and door, zoned air con
- Walk to Beaumont Road Public School, bus to Killara High and Macquarie Uni
- Walk to shops + Lane Cove National Park, bus to rail, North Ryde, Chatswood