

17 Crystalline Road, Spearwood, WA 6163

House For Sale

Monday, 1 July 2024



17 Crystalline Road, Spearwood, WA 6163

Bedrooms: 4

Bathrooms: 2

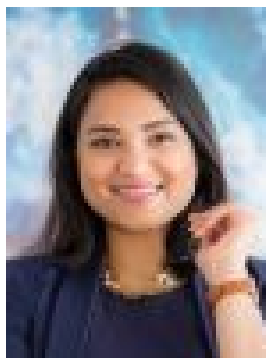
Parkings: 2

Area: 424 m2

Type: House



David Bombara
0862752777



Kaj Arora
0862752777

From \$920,000

From the Sellers perspective: Living in Spearwood has been a magical experience for us. This suburb offers a convenient location with easy access to Fremantle and Perth CBD, fostering a strong sense of community and a friendly atmosphere. Spearwood is known for its quality schools, diverse shopping and dining options, and an abundance of outdoor activities, including beautiful beaches, parks, and nature reserves. Raising our daughter here has been a joy, and we will deeply miss the friends and community we've become a part of. We hope the new owners enjoy this home and the neighbourhood as much as we have.

Home Features:

- **Toughened Glass Windows:** Minimize external noise for a peaceful indoor environment.
- **Privacy and Friendly Neighbours:** Situated at the back of a train line, offering privacy with only two quiet, friendly neighbours.
- **Solar Panels (Installed 2019):** Significantly reduced energy bills.
- **Ample Storage:** Large linen cupboard.
- **Theatre Room:** Perfect for movie nights.
- **Expansive Living Area:** Combined living and dining area with views of the backyard.
- **Fruit Trees:** Mandarin and miniature lemon trees in the backyard.
- **Security:** Front doorbell with security features.
- **Climate Control:** Reverse cycle air conditioning throughout.
- **Spacious Bedrooms:** His and Her robes in the master bedroom; built-in robes in all three minor bedrooms.
- **Low Maintenance Yard:** Easy to care for front yard.
- **Modern Kitchen:** Includes a dishwasher.

Neighbourhood Perks: Proximity to Amenities, 200m walking distance to cafes, the best Indian restaurant in WA, Pilates gym, hairdresser, and Thai restaurant. Located in a Family-Friendly area so very close to two daycare centres, perfect for growing families. Beach Access walking or driving distance to Coogee Beach with recreational areas within walking distance to various parks in the estate.

Council Rates: \$2,350.00 p.a. (approx)
Water Rates: \$1,517.09 p.a. (approx)