

**17 Kestrel Road, Park Ridge, QLD, 4125**

**House For Sale**

Wednesday, 14 August 2024



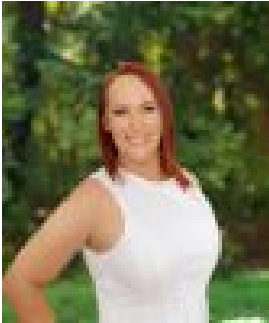
17 Kestrel Road, Park Ridge, QLD, 4125

**Bedrooms: 4**

**Bathrooms: 2**

**Parkings: 2**

**Type: House**



Niki Blenkins

0421229033

## BRAND NEW - Modern living in Park Ridge: where lifestyle meets convenience

Discover the allure of Park Ridge, a thriving community that perfectly balances the vibrancy of modern living with the tranquillity of a suburban escape. Situated in a prime location, 17 Kestrel Road offers the ideal setting for families and investors alike, providing a seamless blend of comfort, style, and convenience. With its contemporary design, this brand-new four-bedroom home invites you to experience a lifestyle of ease and elegance.

Step inside, and you're immediately welcomed by the sense of space and light that defines this home. The open-plan kitchen, living, and dining area serves as the heart of the home, where family and friends can gather in comfort. Crisp white tones and contemporary finishes create a stylish backdrop, while the air-conditioned living space ensures comfort all year round. The modern kitchen is a chef's delight, featuring a breakfast bar, quality appliances, and ample storage, making meal preparation a joy.

The master suite is complete with a walk-in robe and a well-appointed ensuite while the additional three bedrooms are good-sized, each equipped with built in robes and ceiling fans to ensure comfort during warmer months. As you explore further, the covered alfresco area extends the living space outdoors, perfect for entertaining or simply unwinding after a long day.

### INSIDE

- Open-plan kitchen, living, and dining area with air conditioning
- Contemporary kitchen with breakfast bar and quality appliances
- Master suite with walk-in robe and ensuite
- Three additional bedrooms with built in robes and ceiling fans
- Large main bathroom with separate bath and shower
- Crisp white tones and contemporary finishes throughout
- Security screens for peace of mind

### OUTSIDE

- Fully fenced 403m<sup>2</sup> block for privacy and security
- Double car garage with internal access
- Covered portico entry with great street appeal
- Covered alfresco area with ceiling fan, perfect for outdoor living
- Side access offering additional convenience

Park Ridge is a community designed for modern living; with everything you need just moments away. Enjoy the convenience of local shopping centres, parks, and recreational facilities, all within a short drive. The location also offers easy access to major transport routes, making the daily commute to Brisbane or the Gold Coast a breeze.

- 350m to the Friendly Grocer
- 2 min drive to St Francis' College
- 3 min drive to Park Ridge Pony Club
- 8 min drive to Park Ridge State School
- 9 min drive to Park Ridge State High School
- 9 min drive to Woolworths
- 30 min to Brisbane
- 45 min drive to Gold Coast

Whether you're looking to invest in your future or find the perfect place to call home, this is an opportunity not to be missed. Contact the Hunt Team today, 17 Kestrel Road is waiting to welcome you home.