

**17 Pansy Street, Ripley, QLD, 4306**



**House For Sale**

Wednesday, 25 September 2024

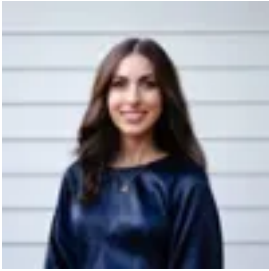
17 Pansy Street, Ripley, QLD, 4306

**Bedrooms: 4**

**Bathrooms: 2**

**Parkings: 2**

**Type: House**



Vanya T

## Brand New and Ready to Move In!

### Essential Details at a Glance:

- 219m<sup>2</sup> Home on a 420m<sup>2</sup> Block
- 4 Bed, 2 Bath, 2 Garage
- Built in 2023 by Robinson Projects
- Brand New. Never lived in
- Currently Vacant
- Ripley Valley Estate
- Zoned for Ripley Central State School
- Council Rates: \$554/quarter
- Rental Appraisal: \$630/week

Forget the hassle of building! Enjoy moving into a brand new family home located just minutes from popular schools, future amenities and existing shopping centres. With 4 bedrooms, a light and airy open-plan layout, a central living area and a low-maintenance yard perfect for kids and pets, this home will be ideal for first home buyers or those looking for a secure investment in a family-friendly community.

### Property Features:

- Brand new - never lived in
- Unique front façade creates a standout street presence
- 4 spacious bedrooms with mirrored built-ins and fans
- Large master bedroom with walk-in robe, air-conditioning and ensuite
- Ensuite with stylish black frame oversized shower, vanity and toilet
- Air-conditioned open-plan kitchen, living and dining areas lead out to the breezy alfresco
- Spacious kitchen with 4-burner electric cooktop, oven, fridge space, soft close drawers and walk-in pantry
- Main bathroom with bath, shower and toilet
- Stylish black tap ware throughout
- Separate central study area
- Large laundry with external access door
- Upgraded 2.6m ceilings
- Timber vinyl flooring throughout
- Steel frame house
- Flat and fully fenced yard on 420m<sup>2</sup> block

### Location\*:

- Zoned for Ripley Central State School
- Easy access to Cunningham and Centenary Highways
- 1 Minute Walk to Ripley Central State School
- 6 Minutes to Ripley Town Centre Shopping (Coles)
- 15 Minutes to Ipswich CBD
- 20 Minutes to Springfield Train Station
- 45 Minutes to Brisbane CBD

17 Pansy Street is best viewed in person - please contact Vanya to arrange a private inspection, or we'll see you at the next open home!

### Disclaimer:

Ray White has taken all reasonable steps to ensure that the information in this advertisement is true and correct but accepts no responsibility and disclaims all liability in respect to any errors, omissions, inaccuracies or misstatements contained. Prospective purchasers should make their own enquiries to verify the information contained in this advertisement.

\* Times Indicative Only