

17 Riberry Crescent, Mernda, Vic 3754



House For Sale

Wednesday, 3 July 2024

17 Riberry Crescent, Mernda, Vic 3754

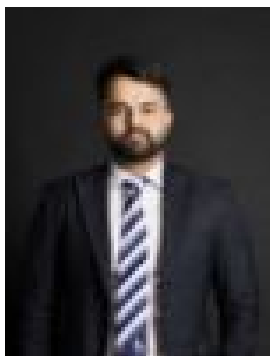
Bedrooms: 4

Bathrooms: 2

Parkings: 2

Area: 514 m2

Type: House



Jatin Mehta
0426973800

Simmonds Ex Display Home

Unveil the essence of refined living in this single-storey residence, nestled in the tranquil surroundings of Mernda. This immaculate home features a seamless open-plan design that integrates the kitchen, living, and dining spaces, creating an expansive area perfect for entertaining and relaxation. Adorned with elegant tile flooring throughout, each space is designed for both aesthetic appeal and practicality. The heart of the home is the stylish kitchen, boasting a stone island bench and breakfast bar, complemented by a mosaic tile splashback and high-end Technika stainless steel appliances, including a 5-burner gas stove. This culinary space is ingeniously linked to the dining area, fostering social interaction while maintaining a distinct area for intimate dinners. Comfort meets style in the four plush-carpeted bedrooms, each equipped with built-in robes. The master suite is a sanctuary of luxury, featuring a walk-in robe, a spacious ensuite with a double vanity, and double door entry, ensuring a private and serene retreat. Step outside to discover a backyard designed for leisure and ease, featuring two decks and fake turf for a low-maintenance lifestyle. The outdoor space is perfect for al fresco dining and includes a built-in barbeque stove, making it an entertainer's dream. Additional amenities include ducted heating and cooling throughout, ensuring year-round comfort, a large double garage with extensive cupboard storage, and a dedicated laundry room. Located on a peaceful road, this home promises a quiet lifestyle within walking distance to local shops and amenities. With its thoughtful layout and premium finishes, 17 Riberry Crescent offers an unparalleled living experience, perfect for those seeking a blend of luxury and convenience. Zoned for Mernda Central College and Mernda Park Primary School, This home promises to be the family friendly retreat you have been looking for. This property is listed in conjunction with Group Real estate. Contact Daniel Lock - 0404 203 773 Due diligence checklist - for home and residential property buyers - <http://www.consumer.vic.gov.au/duediligencechecklist>