

17 Ward Street, Schofields, NSW 2762

House For Sale

Tuesday, 25 June 2024



17 Ward Street, Schofields, NSW 2762

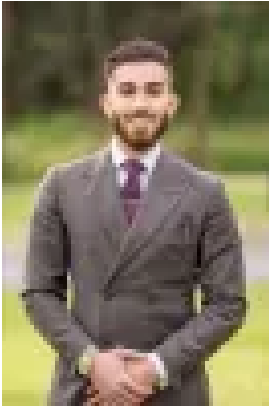
Bedrooms: 4

Bathrooms: 3

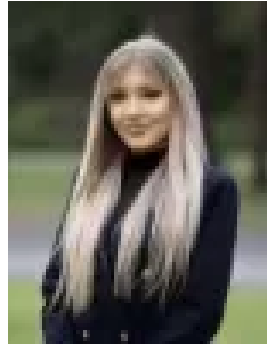
Parkings: 2

Area: 425 m2

Type: House



Hardii Admin
0298381529



Alex Molodykh
0298381529

Just Listed! Contact Hardii!

Nirvana Estate Agents proudly present "The Altrove Retreat" that is - 17 Ward Street. Established among the master-planned and exclusive region of Schofields, Altrove, this majestic 37.5 squares family retreat is the manifestation of the modern suburban dream we ought to fulfill. The warm sandstone styled finish of The Altrove Retreat satisfies the appeal for grandiose and palatial living. As you approach - The Retreat Awaits. A Sanctuary of Luxury

Upstairs, four spacious bedrooms await, three featuring walk-in robes with the master hosting a mega-robe fit for even the most flamboyant closet choices. Taking the width of the house, the master-retreat provides space within a class of its own all whilst offering serene, picturesque views. Gourmet Kitchen and Luxurious Living Areas

The kitchen is a chef's dream, equipped with premium appliances, an expansive island bench, and an oversized walk-in pantry hosting an additional butler's pantry. The open-concept dining and living area transitions smoothly to the alfresco space through large sliding doors, epitomising seamless indoor-outdoor living. Upstairs, a dedicated rumpus room offers an ideal retreat for family movie nights, providing a perfect escape after a busy day.

Year-Round Entertainment

The elegantly tiled and meticulously manicured alfresco area sets a new standard for outdoor living. Complemented by a low-maintenance, landscaped yard, this space minimizes upkeep while maximizing your enjoyment.

Premium Features and Finishes

- Double garage with painted floors
- Dual-zone ducted air conditioning
- Premium interior timber-styled flooring with matte finishing
- Additional gas outlets indoors and outdoors for gas heating/BBQ

Enjoy the convenience of walking to the train station, making your daily commute a breeze. Just a 5-minute drive to the New Schofields Shopping Village and a quick 10-minute drive to Rouse Hill Shopping Centre for all your shopping and entertainment needs.

Location Highlights:-

- WALK 5 minutes to Altrove Hilltop Park
- WALK 10 minutes to Schofields Train Station
- 5 minutes drive Schofields Shopping Village
- 5 minutes drive to Schofields Public School
- 8 Minutes drive to Tallawong Metro Station
- 10 minutes drive to Rouse Hill Town Centre

Disclaimer: Nirvana Real Estates gather information from sources believed to be reliable. While we trust its accuracy, we cannot guarantee