

174 MacDonald Road, Edmondson Park, NSW 2174



House For Sale

Tuesday, 2 July 2024

174 MacDonald Road, Edmondson Park, NSW 2174

Bedrooms: 3

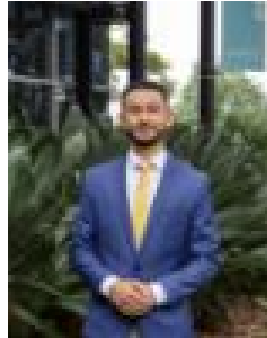
Bathrooms: 2

Parkings: 2

Type: House



Tim Aaron
0434059820



Alejandro ' Nagamine
0404115515

\$950,000 - \$1,000,000

Welcome to 174 MacDonald Road, Edmondson Park, where modern comfort meets suburban tranquillity. This immaculate residence boasts a perfect blend of contemporary architecture and practical design, ideal for families seeking both style and functionality. The open-plan layout creates a sense of airiness and allows for effortless movement between the gourmet kitchen and the elegant dining area. It is perfect for entertaining or everyday living, this space is bathed in natural light streaming through large windows that offer picturesque views of the surrounding neighbourhood. Located in a highly sought-after neighbourhood, 174 MacDonald Road offers not only a beautiful home but also the convenience of nearby amenities such as schools, parks, shopping centres, and easy access to transportation links. Features Include: * Three great sized bedrooms with built in wardrobes to all * Master bedroom with a stunning ensuite and balcony access * Open plan living and dining * Spacious modern kitchen boasting a breakfast bar, gas cooking, stainless steel appliances plus plenty of bench and cupboard space * Main bathroom with floor to ceiling tiles and a bathtub * Study nook * Powder room with a third toilet * Walk in linen * Internal laundry * Downlights throughout * Ducted air conditioning * Private paved courtyard * Two undercover secure parking spaces Location: * Approx 400m to Ed. Square Shopping Centre * 450m to Bardia Public School * 550m to Edmondson Park Station * 650m to Russell Copeman Park * 1.5km to Edmondson Park Public School * 2.1km to St Francis Catholic College Don't miss your chance to make this stunning property your new home. Schedule a viewing today and experience the charm of 174 MacDonald Road, Edmondson Park!