

**17B Thomas Street, North Rothbury, NSW, 2335**



**House For Sale**

Tuesday, 1 October 2024

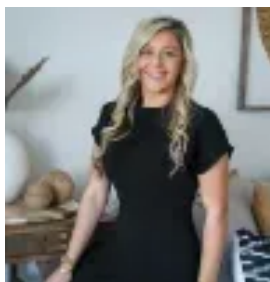
17B Thomas Street, North Rothbury, NSW, 2335

**Bedrooms: 3**

**Bathrooms: 2**

**Parkings: 2**

**Type: House**



Chelsea Burns

## **Family home or great investment**

This near new contemporary home is designed to combine modern living with space and comfort. Spanning over a large 809sqm parcel with side access and spectacular views, this home would ideally suit an investor looking for a near new home ready for a tenant or a family looking for a home in the ideal location ready to move into. Located close to the new Huntlee shopping centre, Huntlee Tavern and the Hunter Expressway making for great convenience.

- Three bedrooms all with ceiling fans and built-in robes
- Master suite with walk-in robe and ensuite
- Ducted air conditioning throughout for year-round comfort
- Sleek design kitchen with breakfast bar, gas cook top and dishwasher
- Undercover entertainment area with sunshades perfect for afternoon barbecues
- Open plan living and dining space blending indoor and outdoor living
- Fully fenced sizeable yard with magnificent mountain views
- 6.6Kw solar system connected to a 5.5kw inverter and additional solar roof vent
- Seven minute drive to Hunter Valley's famous Vineyards, restaurants and golf courses
- Close proximity to shops, parks, recreational facilities, Hunter Expressway

### **KEY DETAILS:**

Council Rates \$485pq

Water Rates \$240pq