

# 18 Rutman Close, Werribee, Vic 3030



## House For Sale

Wednesday, 10 July 2024

18 Rutman Close, Werribee, Vic 3030

Bedrooms: 4

Bathrooms: 2

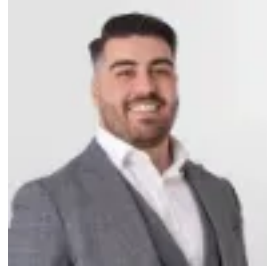
Parkings: 2

Area: 503 m2

Type: House



Justin Tong  
0431179619



Ruben Jabbal  
0467703950

**Reserve Price: \$650,000**

Nestled in the heart of Werribee, 18 Rutman Close is an impressive property that epitomizes modern family living. This home, situated on a generous 504m<sup>2</sup> block, boasts a multitude of features designed to accommodate a growing family while providing ample space for entertaining and relaxation. As you step inside, you'll be greeted by high ceilings that enhance the sense of space and light throughout the home. The well-thought-out floor plan includes four generously sized bedrooms, each designed to offer comfort and privacy. The master bedroom serves as a luxurious retreat, complete with an ensuite bathroom featuring an oversized shower and expansive cabinet space. The remaining three bedrooms are serviced by a beautifully appointed second bathroom, ensuring convenience for family members and guests alike. The multiple living areas are a standout feature of this home. Whether you're hosting a formal gathering or enjoying a casual movie night, the spacious living and family rooms cater to all occasions. The modern kitchen is equipped with high-quality appliances, ample counter space, and abundant storage, making meal preparation a pleasure. Storage will never be an issue in this home, thanks to the thoughtful inclusion of ample storage spaces throughout. From built-in wardrobes in the bedrooms to additional storage cupboards, everything has its place, ensuring a clutter-free living environment. The outdoor area offers endless possibilities for outdoor activities and relaxation. The drive-through access from the double garage is a convenient feature, providing easy access to the backyard and additional parking if needed. Location is key, and 18 Rutman Close does not disappoint. The property is ideally situated close to public transport, making commuting a breeze. Nearby parklands offer a serene escape from the hustle and bustle, perfect for family picnics, leisurely walks, or simply enjoying nature.