

18 The Esplanade, Portarlington, VIC, 3223

House For Sale

Wednesday, 14 August 2024



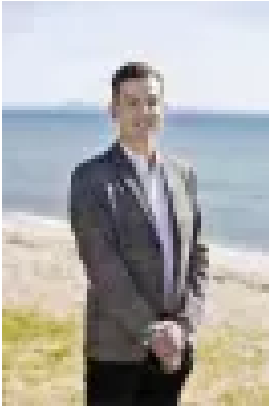
18 The Esplanade, Portarlington, VIC, 3223

Bedrooms: 3

Bathrooms: 3

Parkings: 2

Type: House



Bailey Grace

0352571778

Exceptional Elegance

Welcome to your dream beachfront home, where modern elegance meets coastal charm. This exceptional property offers the perfect blend of luxury and comfort, situated with direct access to the serene shores of Port Phillip Bay and a short walk to the vibrant town centre of Portarlington.

Boasting stunning views of the bay, the heart of the home features an open-plan living and dining area bathed in natural light through north-facing windows. This living space seamlessly connects to the spacious balcony offering the ideal location to entertain or simply enjoying the sunshine while watching the ships sail on the bay.

The well-appointed kitchen, complete with stone island benchtops, is perfect for the home chef, allowing you to prepare meals while taking in the stunning vistas.

The spacious master bedroom features an elegant ensuite with double vanity, providing a private sanctuary for relaxation. Tall north-facing windows mean you can wake up every day with a view like no other.

The additional downstairs bedroom also boasts an ensuite, ensuring privacy and convenience for guests or family members while the third bedroom is located upstairs and serviced by a central bathroom and separate toilet.

Low-maintenance gardens ensure that you get to spend more time enjoying the coastal lifestyle you've been dreaming of. The two-car garage offers ample off-street parking and storage, completing this exceptional home. The backyard is a private oasis designed for both entertainment and relaxation, providing a peaceful retreat to unwind after a long day at the beach.

Truly an exceptional home ensuring you will experience the ultimate coastal lifestyle with unparalleled views and luxurious living spaces where every detail has been thoughtfully designed for comfort and style.