

**19 Bella Vista Circuit, Edens Landing, Qld 4207**



**House For Sale**

Monday, 8 July 2024

19 Bella Vista Circuit, Edens Landing, Qld 4207

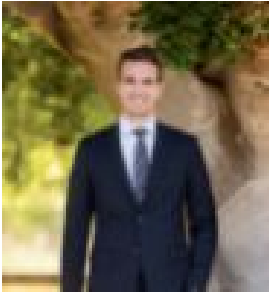
**Bedrooms: 4**

**Bathrooms: 2**

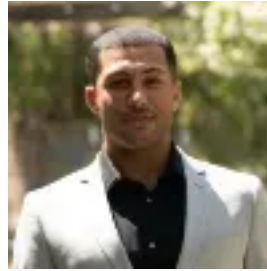
**Parkings: 2**

**Area: 681 m2**

**Type: House**



**PAUL PENKLIS**  
0738076334



**TOMMY BARADEI**  
0738076334

## Offers Over \$795,000

This home's appeal is undeniable, with its beautifully manicured lawn and inviting facade. You'll appreciate the quiet and peaceful location, nestled on a beautiful leafy street among quality homes. As you step inside, the main living and dining area is bathed in natural light, creating a warm and inviting atmosphere. Designed for modern family living, the light and airy kitchen serves as the heart of the home, offering a view of the backyard and an open-plan layout. Step outside, and you'll feel as though you've entered your own private oasis. The serene backyard features a spacious covered patio perfect for entertaining or unwinding. The well-maintained lawn and lush landscaping create a private retreat for relaxation and enjoyment. The home offers great side access, perfect for parking extra vehicles, storing a boat, or creating a convenient garden area. The master bedroom is a true sanctuary, featuring stylish finishes and direct access to the patio. Natural light floods the space, highlighting the beautiful flooring. It's the perfect place for rest and rejuvenation. With your very own ensuite, you can pamper yourself in a tranquil, private setting. All the bedrooms are generously sized with built-in robes, encompassing style, space, and privacy in a desirable area. This property is expected to attract significant interest. Key features:- 4 spacious bedrooms for family comfort- Stay cosy year-round with a split system air conditioner- Tiled areas seamlessly blend with the timber-look vinyl flooring- Secure backyard for the children and/or pets- Equipped with Ceiling fans- Double Lock up garage- Island Kitchen Benchtop- Large Outdoor Patio Area- Side Access Proximity:- 1km away - Edens Landing State School- 9 min - Beenleigh Shopping Centre- 14 minutes from Logan Hospital and Griffith University- Canterbury College within 2.5 km- 5 minutes- Holmview shopping centre- 5 minutes - Bunnings Bethania & ALDI- Only a 30 minutes drive to Brisbane CBD and 45 minutes drive to Gold Coast Disclaimer: All information contained herewith, including but not limited to the general property description, price and the address, is provided to Ray White Beenleigh by third parties. We have obtained this information from sources we believe to be reliable; however, we cannot guarantee its accuracy. The information contained herewith should not be relied upon and you should make your own enquiries and seek advice in respect of this property or any property on this website.