

19 Liddon Place, Port Adelaide, SA, 5015



House For Sale

Friday, 16 August 2024

19 Liddon Place, Port Adelaide, SA, 5015

Bedrooms: 3

Bathrooms: 1

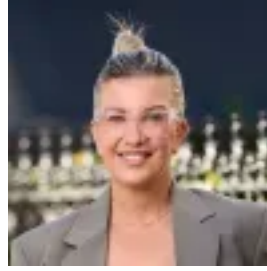
Parkings: 1

Area: 197 m2

Type: House



Nick Psarros
0871236123



Niki Pittakis

Elegant 1910 Cottage with Classic White Picket Fence

Step into the charm of this beautifully maintained 1910 cottage at 19 Liddon Place. With its classic façade, complete with a white picket fence and modern digital entry, this home offers the perfect blend of timeless appeal and contemporary convenience. Whether you're looking to renovate and make it your dream home or simply enjoy its current character, this property provides endless possibilities. The home offers many character features, enhancing its historic charm, while modern upgrades ensure comfort and functionality. With three bedrooms, including a versatile third room that can double as a home office, this residence suits a variety of lifestyles.

Key Features: Bedrooms 1 & 2 with split system reverse cycle air conditioning
Feature fireplace in the living room, perfect for cosy nights in
Dishwasher for modern convenience
Updated European laundry with a stylish tile splashback
Bathroom features a classic claw bathtub with an overhead shower
Expansive outdoor entertaining area, ideal for hosting guests
Separate toilet for added convenience
Storage shed for additional space
Built-in bird aviary atrium
Artificial lawn in the backyard for easy maintenance
Situating in the heart of Port Adelaide, 19 Liddon Place offers more than just a beautiful home—it provides a lifestyle. Renowned for its rich maritime heritage and dynamic cultural scene, Port Adelaide seamlessly blends historical charm with modern conveniences. Residents benefit from proximity to a range of local cafes, shops, and attractions, including historic sites and picturesque waterfront views. Families will appreciate the nearby schools, such as Port Adelaide Primary School and Lefevre High School, as well as the convenient access to public transport and recreational facilities. Just a short drive from Adelaide CBD, Port Adelaide's growing community and ongoing development make it a promising investment for the future.

To place an offer on this property, please complete this Letter of Offer form <https://forms.gle/2P3oovTaZZ7VdYjS6>
Disclaimer: Neither the Agent nor the Vendor accepts any liability for any error or omission in this advertisement. Any prospective purchaser should not rely solely on 3rd party information providers to confirm the details of this property or land and is advised to enquire directly with the agent to review the certificate of title and local government details provided with the completed Form 1 vendor statement.