

190 Shaftsbury Road, Eastwood, NSW, 2122

STONE

House For Sale

Friday, 9 August 2024

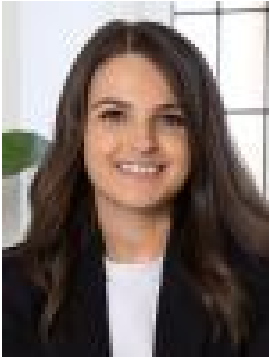
190 Shaftsbury Road, Eastwood, NSW, 2122

Bedrooms: 2

Bathrooms: 1

Parkings: 1

Type: House



Chloe Mawass
0288661500



Jessica Zhou
0288661500

Incredible future prospects 400m from Eastwood's hub on 663.9sqm

Ideal for a dream-maker's transformation, this single-level brick classic presents exceptional renovation and redevelopment potential (STCA). Nestled on a generous 663.9sqm parcel of land, its brilliant location provides an unsurpassed context for family living, mere steps away from highly-sought-after schools and universities, Eastwood's bustling village, and its impressive train station and bus network.

- Captivating original character with a charming bay window and inviting porch
- Spacious formal lounge room with a timber fireplace, plus a versatile sunroom
- Traditional-style kitchen paired with dedicated, generously sized dining room
- Two sizeable, carpeted bedrooms featuring ornate plasterwork and picture rails
- Classic bathroom with a bathtub, external laundry room, and a single carport
- Lush, peaceful oasis featuring a manicured lawn bordered by beautiful gardens
- Approx. 700m to Eastwood Station, 500m to Marist Eastwood, 600m to St Kevin's
- 280m to Eastwood Public School, 1km to Ryde Hospital, 11 minutes to Macquarie Shopping Centre
- In the catchment areas for Eastwood Public School and Marsden High School

Water Rates - \$173.29 Per Quarter

Council Rates - \$345 Per Quarter

Disclaimer: This advertisement is a guide only. Whilst all information has been gathered from sources we deem to be reliable, we do not guarantee the accuracy of this information, nor do we accept responsibility for any action taken by intending purchasers in reliance on this information. No warranty can be given either by the vendors or their agents.