

**2/2 Cooper Street, Hoppers Crossing, Vic 3029**



**House For Rent**

Wednesday, 19 June 2024

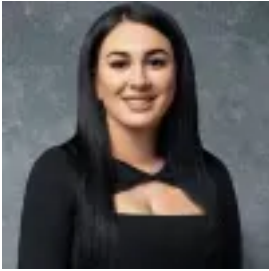
2/2 Cooper Street, Hoppers Crossing, Vic 3029

**Bedrooms: 3**

**Bathrooms: 1**

**Parkings: 1**

**Type: House**



Demá Haddad  
0399757080

## \$430 Per Week

LJ Hooker Point Cook presents 2/2 Cooper Street, Hoppers Crossing. The modern unit comprises three bedrooms, one bathroom and single car accommodation, positioned on a low maintenance corner allotment. Centrally located within thriving Hoppers Crossing, this location offers enormous appeal, just moments from local shops, esteemed schools, and public transport. - Open plan living and dining spaces with oversized windows and an abundance of natural light. The interiors are neutral in tone and finished with practical tiled flooring and split system air conditioning. - A modern and well-appointed kitchen with a central island bench and breakfast bar for casual meals. Appliances include stainless-steel gas cooktops, under bench ovens and dishwashers, while ample storage includes timber-look overhead cabinetry. - Three spacious bedrooms, each with built-in robes and brand-new carpeted flooring, plus a central bathroom with ensuite access from the master bedroom, a bathtub and separate toilet. - Fully fenced grounds, each with low maintenance landscaping, established gardens and a paved patio space extending from the main living zones, providing a sunny space for alfresco dining. - Additional features include single lock up garages with internal access, internal laundry facilities, split system A/C unit, ducted heating, and brand-new blinds throughout. Situated in sought-after Hoppers Crossing, these properties offer exceptional convenience, within minutes of Wyndham Village Shopping Centre, Hogans Corner Shopping Centre, and Pacific Werribee. Local amenities include Werribee Mercy Hospital, Aqua pulse Fitness Centre, Hogans Road Reserve, and the Skeleton Waterholes Creek. For students, nearby schools include Thomas Carr College, St James the Apostle Primary School, Baden Powell College Derrimut Heath, and Westbourne Grammar School, while commuters will enjoy easy access to both Tarneit and Hoppers Crossing Stations. Disclaimer Note. All stated dimensions are approximate only. Particulars given are for general information only and do not constitute any representation on the part of the vendor or agent. School zoning stated on [findmyschool.vic.gov.au](http://findmyschool.vic.gov.au) as at 19/06/2024 and subject to change.