

2/21 Bradley Drive, Mill Park, Vic 3082



House For Sale

Wednesday, 3 July 2024

2/21 Bradley Drive, Mill Park, Vic 3082

Bedrooms: 3

Bathrooms: 1

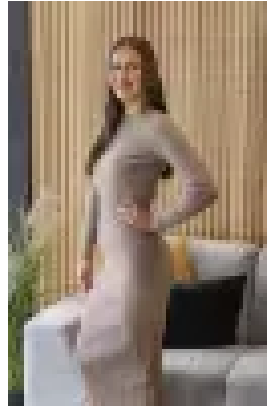
Parkings: 1

Area: 387 m2

Type: House



Jay Moxon
0391111707



Imogen Hammond
0391111707

ESR: \$500,000 - \$550,000

Enviably located within a highly sought-after locale and providing easy access to Westfield Plenty Valley, South Morang Train Station, RMIT, Uni Hill, reputable schools, and gorgeous parklands, this sensational starter is an excellent opportunity for all first home buyers, downsizers, and investors. Comprising 3 spacious bedrooms, sizeable central bathroom, large lounge upon entry, large timber kitchen boasting ample cabinetry and bench space, adjacent dining area plus a generous backyard for the kids and pets to play. Extra features include the comforts of ducted heating, heating and cooling via split system, low maintenance gardens, NBN, immaculate presentation throughout, a single car garage plus further off-street parking. Inspect today!!