

2 Euclase Link, Wellard, WA 6170



House For Sale

Wednesday, 10 July 2024

2 Euclase Link, Wellard, WA 6170

Bedrooms: 4

Bathrooms: 2

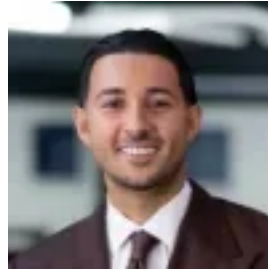
Parkings: 2

Area: 393 m2

Type: House



Vincent Parry
0893855559



Ali Seyfi
0893855559

From \$639,000

Step into modern living with this stunning 3-4 bedroom single level home built in 2012, perfectly situated on a corner block in the ever popular suburb of Wellard. Boasting a coveted north-facing aspect, this residence is flooded with natural light throughout the day, creating a warm and welcoming ambiance throughout the primary living areas. The thoughtful design maximizes the use of space and light, providing a seamless indoor-outdoor flow for ultimate comfort and relaxation. This modern and contemporary home features high-quality finishes and fixtures, offering both style and functionality. The open-plan layout is perfect for entertaining guests or simply enjoying quality time with your family. The well-appointed kitchen features stone bench tops, complete with sleek appliances, ample storage, and a breakfast bar for casual dining. The primary bedroom located at the front of the home is generously sized with a modern finished ensuite and walk in robe. Across the hall is the current study or theatre room but can be used as a 4th bedroom, kids play room or additional living area. The choice is yours. To the back of the home you'll find the 2nd and 3rd bedrooms, both with built in wardrobes. The main family bathroom is set between, featuring sleek modern finishings with separate bath and shower. Outside, the updated alfresco area doubles almost as an additional room with pull down screens allowing for year round use. The low-maintenance yard provides the perfect setting for outdoor gatherings, BBQs, or simply basking in the Western Australian sun. The corner block location offers added privacy and space for potential landscaping or gardening projects. Towards the back of the home is an additional courtyard adding further entertainment space or an area to add further value to in future. If the back yard isn't enough, the entire family can walk a few minutes up the road to the centrally located Emerald Park and have a BBQ or play until the heart is content. Located in the thriving suburb of Wellard, you'll enjoy easy access to local amenities including Wellard Square Shopping Centre, Kwinana Marketplace, and Costco Wholesale. Convenient access to Wellard Train Station and Kwinana freeway for easy commuting to Perth City. Approximately 30-45mins. Schools such as Wellard Primary School and Kings College are nearby. Embrace a relaxed lifestyle with everything you need right at your doorstep. FEATURES INCLUDE:- 2x split system air conditioning - Stone bench tops in kitchen- Gas cooking - Tiled flooring- Carpeted in bedrooms- Separate laundry- Security shutters to the front of the home- App-controlled garage door- Reticulated gardens and lawn- Garden shed Council Rates: Approx \$2,017 per annum Water Rates: Approx \$1,025 per annum Disclaimer: The particulars of this listing have been prepared for advertising and marketing purposes only. We have made every effort to ensure the information is reliable and accurate, however, clients must carry out their own independent due diligence to ensure the information provided is correct and meets their expectations.