

# 2 Waterline Crescent, Waterford, Qld 4133

## House For Rent

Sunday, 23 June 2024



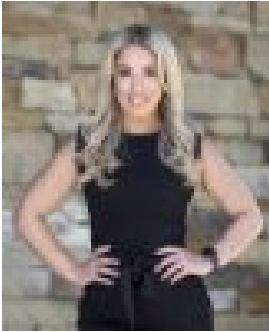
2 Waterline Crescent, Waterford, Qld 4133

**Bedrooms: 4**

**Bathrooms: 2**

**Parkings: 2**

**Type: House**



Katerina Vounakis

0401764217

**\$650 per week**

Situated on a large corner block with a tranquil parkland backdrop this great value family home features a spacious open plan layout with huge yard & side access and is ready for you to move straight into! Featuring: Kitchen with ample storage Open plan living & dining with air conditioning Large undercover alfresco with parkland views Merbau decking with patio to front of house Master bedroom with plantation shutter, built in robe & ensuite Security roller shutter to external master bedroom window Bedrooms 2,3 with built ins & ceiling fans Bedroom 4 with ceiling fan New carpet to all bedrooms New paint throughout New wood look flooring Ceiling fans throughout Huge fully fenced yard with landscaped gardens Side access with double gates, perfect for parking the caravan, boat or trailer Double Lock Up Garage Location is so convenient with only minutes to Aldi, Bunnings Bethania, Holmview Central Shopping Centre and an array of local shops, Bethania Lutheran Primary School, Waterford State School and Canterbury College. And only 30 minutes to Brisbane CBD.