

20 Downs Street, North Ipswich, QLD, 4305



House For Sale

Friday, 16 August 2024

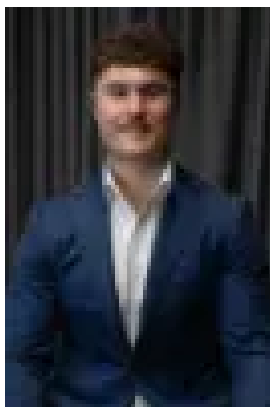
20 Downs Street, North Ipswich, QLD, 4305

Bedrooms: 3

Bathrooms: 1

Parkings: 2

Type: House



Charles Kimmorley
0477652889

ELEGANT CHARACTER HOME ON EXPANSIVE CORNER BLOCK IN THE HEART OF IPSWICH

Set on a generous 607m² fully fenced corner block, 20 Downs Street in North Ipswich is a property that combines space, charm, and modern convenience. This beautiful character home immediately captivates with its stunning hardwood breezeways, decorative timber-accented ceilings, and rich timber flooring throughout the living spaces. Classic VJ panelling on the walls and exquisite stained glass windows further enhance the timeless appeal of this residence.

At the heart of the home lies a modern, renovated kitchen, thoughtfully designed with an island bench that provides ample storage, a sleek ceramic cooktop, and a quality oven—perfect for any culinary enthusiast. High ceilings add to the spacious feel of the home, while split system air conditioning and heating ensure comfort throughout the year. The layout is both functional and inviting, featuring separate living and formal dining rooms, ideal for both relaxation and entertaining.

Practical features abound, including a secure lock-up garage, a separate laundry located underneath the house with additional storage space, and the iconic Australian classic hills hoist clothesline in the backyard. The galvanized roof adds to the home's durability, promising many years of worry-free living.

Positioned in a prime location close to the Ipswich CBD, this property offers a unique blend of historical charm and modern convenience. Whether it's the generous block size, the beautiful character details, or the thoughtful modern updates, 20 Downs Street is a home that caters to a range of lifestyle needs.

For the Savvy investor, the rental income guide is \$500 - \$525 per week - Currently tenanted until 21st October 2024.
Ipswich City Council Rates: Approximately \$580 per quarter (subject to change)

Located within close proximity to several reputable schools, including Ipswich North State School and St. Joseph's Primary School, St Mary's College, St Edmund's College and Ipswich Grammar School. This home is an excellent choice for families. Enjoy easy access to local amenities, parks, and public transport, making daily commutes a breeze. North Ipswich is also a very short drive or walk to the Riverlink Shopping Complex and Ipswich's newly refurbished Nicholas Street Precinct ensuring all your shopping and culinary needs are met.

Don't miss out on this fantastic opportunity to secure your dream home in North Ipswich. Contact NGU Real Estate | TKG today to arrange a viewing and make this historic gem yours!

Listing agents: Charles Kimmorley & Andrew Debattista

Don't be disappointed and call us now - I'm waiting for your call.

NGU Real Estate Ripley – The Kimmorley Group

Results Speak Louder Than Words

Disclaimer:

Disclaimer:

NGU Real Estate Ripley | TKG has taken all reasonable steps to ensure that the information contained in this advertisement is true and correct but accept no responsibility and disclaim all liability in respect to any errors, omissions, inaccuracies or misstatements contained. Prospective purchasers should make their own enquiries to verify the information contained in this advertisement.