

20 Junction Street, Parkes, NSW 2870

House For Sale

Tuesday, 25 June 2024

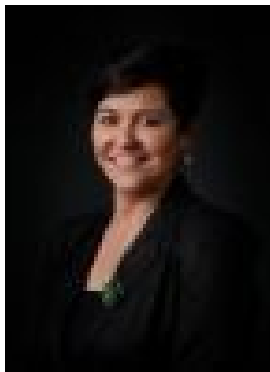
SANDRA TILDSLEY
PROPERTY | POWERED BY SMILE ELITE

20 Junction Street, Parkes, NSW 2870

Bedrooms: 3

Bathrooms: 1

Type: House



Sandra Tildsley

\$400,000

Welcome to this charming three-bedroom home, perfectly situated near the vibrant Central Business District. This inviting residence offers a harmonious blend of classic elegance and modern convenience, making it an ideal haven for both relaxation and urban living. Key features:- Three bedrooms- One bathroom- Separate laundry- Comforts including two reverse cycle split systems- Year built: 1950- Land size: 1012sqm approximately - Council Rates: \$1,404.63 per yearInterior highlights:- Freshly painted throughout, move-in ready with a crisp, clean feel- High ceilings add a sense of space and grandeur- Formal lounge room ideal for entertaining or relaxing- Separate dining/living space creates flexible areas for family gatherings or quiet evenings- Gallery style kitchen is a functional layout for the home chefExterior Features:- Two garden sheds- Rustic timber outside covered paved area, perfect for entertaining- 1012sqm of well-fenced land, perfect for kids, pets or potential extensions- Convenient rear lane access for additional parking or rear accessPrime Location:- Close to CBD, providing easy access to shopping, dining and services- Nearby recreation - enjoy proximity to the bowling club, sporting grounds and a skate parkFor more information or to schedule a viewing, please contact us today. Don't miss this opportunity to own this home in a fantastic location!Disclaimer: All information contained herein is obtained from property owners or third-party sources which we believe are reliable. We have no reason to doubt its accuracy, however we cannot guarantee it. All interested person/s should rely on their own enquiries.