

# 20 Scribbly Gum Close, San Remo, NSW 2262

## House For Sale

Sunday, 23 June 2024

20 Scribbly Gum Close, San Remo, NSW 2262

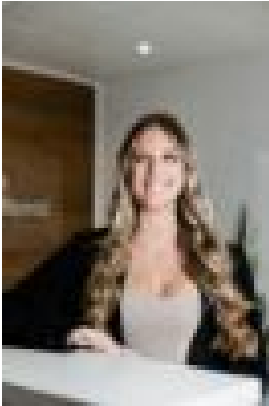
Bedrooms: 3

Bathrooms: 1

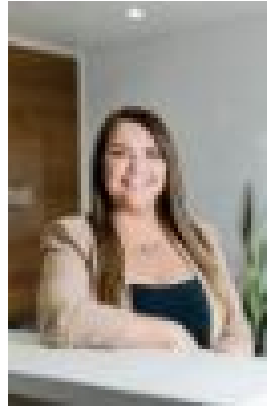
Parkings: 2

Area: 663 m2

Type: House



Shinae Dunkley  
0490545331



Danni Thorncraft  
0432544036

## FOR SALE - CONTACT AGENT

Situated in a desirable, lakeside location, surrounded by quality properties, this family home is not to be missed. Offering a generous block with potential to build a Granny Flat for dual income or a sizable shed, for all the toys STCA. Features include: Three bedrooms, the master with dual wardrobes. A recently renovated, two way bathroom Separate living areas with Air Conditioning Modern kitchen, with dishwasher, 90cm Oven, electric cooking and a huge breakfast bar! Oversized outdoor, under covered entertaining area Double automatic garage with drive through access Large, fully fenced, 663sqm block with room to build a granny flat or shed STCA. Conveniently positioned, close to the M1 Motorway, Shops, Public & High Schools, Cafes, Boat Ramp, Northlakes Oval, Doylo RSL, Transport, and much, much more. Be quick to secure an appointment to view this incredible home by calling Shinae or Danni today! Rental Return Approximately: \$600 per week Disclaimer: All information provided has been gathered from sources we deem to be reliable. However, we cannot guarantee its accuracy and any interested persons should rely upon their own enquiries. Some photos are location/lifestyle images – all measurements/distances/locations/boundaries are approximate. Any interested persons should rely upon their own enquiries.