

20B Livingstone Street, Beaconsfield, WA, 6162



House For Sale

Wednesday, 25 September 2024

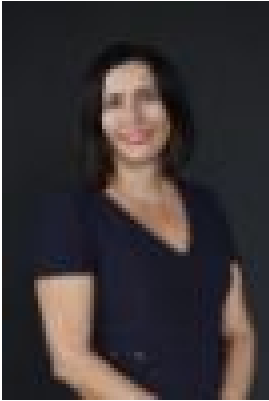
20B Livingstone Street, Beaconsfield, WA, 6162

Bedrooms: 4

Bathrooms: 2

Parkings: 2

Type: House



Marisa Rifici
0432729620

YOU'RE INVITED TO PRIVATE OCEAN VIEW RETREAT

Tucked away via a laneway off Beard Street, this elevated home offers breathtaking year-round ocean views extending out to Garden Island from the expansive upper-level deck. Blending modern living with rustic charm, the home showcases natural limestone, timber and iron elements, all beautifully complemented by a stunning 5-metre fiddle leaf tree, gracefully positioned in the heart of the home.

The flexible layout provides versatile spaces to suit your lifestyle, enhanced by polished timber floors throughout. The ground level features a study nook, a bedroom or home office, a combined bathroom/laundry, and a spacious open-plan kitchen and living area. Steel-framed glass doors lead to the deck and a beautifully crafted courtyard, ideal for outdoor entertaining, complete with recycled brick paving and limestone walls.

Upstairs, you'll find two generous double bedrooms, a semi-en suite bathroom with a bath and an extra large main bedroom. The main bedroom is bathed in natural light, with glass doors that open onto the long upper deck-your perfect spot to soak in the stunning ocean views.

Located within the Beaconsfield Primary School catchment and just minutes from South Fremantle, South Beach, shops, and public transport, this immaculately presented home offers a peaceful lifestyle in a prime location. Whatever the season, you'll love the views and all that 20B Livingstone Street has to offer.

ADDITIONAL FEATURES

- Reverse Cycle air-conditioning x 4 units
- Garden Shed/Store room
- Easy-care reticulated gardens
- Low-maintenance property
- Approximately 1.5km from South Beach
- Approximately 400m to Fremantle Growers Market on Sunday mornings

For more information please call Marisa Rifici on 0432 729 620

Rates & Local Information

Water Rates: \$1,614.48(2023/24)

City of Fremantle Council Rates: \$3160.93 (2024/25)

Zoning: R25

Primary School Catchment: Beaconsfield Primary School

Secondary School Catchment: Fremantle College

***PLEASE NOTE:** While every effort has been made to ensure the given information is correct at the time of listing, this information is provided for reference only and is subject to change. It is recommended that you conduct your own due diligence before making any decisions based on this information.