

21 Ashfield Street, North Ipswich, Qld 4305

Sold House

Wednesday, 26 June 2024



21 Ashfield Street, North Ipswich, Qld 4305

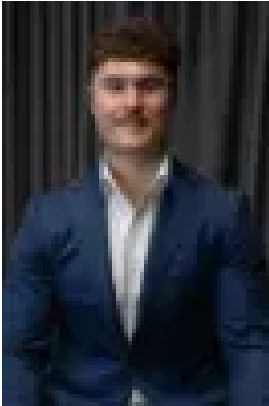
Bedrooms: 4

Bathrooms: 2

Parkings: 2

Area: 800 m2

Type: House



Charles Kimmorley
0477652889



Daniel Parsons
0466461772

\$615,000

Discover your new home on Ashfield Street in the sought-after suburb of North Ipswich. Nestled in a quiet cul-de-sac, this delightful house sits on a generous 800m² block, offering plenty of space for outdoor activities and future expansions. Although minor cosmetic internal repairs will be required, this incredible family provides a great opportunity to get into the housing market! With features like split system air conditioning, built-in robes, and a fully fenced yard ensuring privacy and space for the whole family, this home is ready to welcome you. Step inside to an inviting open-plan living, kitchen and dining area that creates a seamless flow throughout the home. This layout is perfect for family gatherings or entertaining guests, allowing everyone to stay connected whether cooking, dining, or relaxing. Additionally, a separate living area provides extra space for relaxation or activities. The master bedroom is a true retreat with its walk-in robe and adjoining ensuite, offering a private sanctuary for unwinding at the end of the day. All bedrooms in this amazing opportunity feature ceiling fans for added comfort. The property also boasts a gas hot water system, providing efficient and reliable hot water for all your needs. The double secure parking features an electric roller door is currently being used as a recreational room and has had the internal flooring carried through into the garage adding to the properties already large internal feel. For added security, the property is fitted with window and door security screens. North Ipswich is known for its close-knit community and excellent amenities. Nearby schools such as Ipswich North State School and St Joseph's Primary School offer top-notch education options for families. Local parks and recreational facilities provide plenty of opportunities for outdoor activities, while shopping centers are just a short drive away. Ipswich City Council Rates: \$457 per quarter (subject to change) Don't miss out on this opportunity to make Ashfield Street your new address. Homes in this desirable area are snapped up quickly, so act fast! Contact NGU Real Estate | TKG today to arrange a viewing and take the first step towards securing your family's future in North Ipswich. Listing agents: Charles Kimmorley & Andrew Debattista Don't be disappointed and call us now - I'm waiting for your call. Disclaimer: Disclaimer: NGU Real Estate Ripley | TKG has taken all reasonable steps to ensure that the information contained in this advertisement is true and correct but accept no responsibility and disclaim all liability in respect to any errors, omissions, inaccuracies or misstatements contained. Prospective purchasers should make their own enquiries to verify the information contained in this advertisement.