

21 Lee Street, Condell Park, NSW 2200



House For Sale

Wednesday, 26 June 2024

21 Lee Street, Condell Park, NSW 2200

Bedrooms: 4

Bathrooms: 3

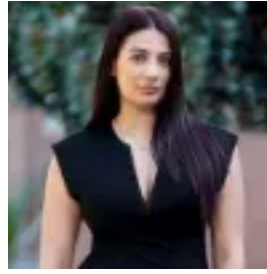
Parkings: 6

Area: 446 m2

Type: House



Joshua Nassif
0499771178



Lillian Bashir
0499411678

All Offers In By 13th July 2024

All Offers In By 13th July 2024 Exemplifying sophistication and remarkable attention to design, this luxury home sets a new benchmark as one of the best homes in the suburb & the City of Bankstown Council. Set on the high side of the street offering excellent district views, this home's timeliness design, gorgeous finishes and functional floor-plan all combine to formulate the perfect family home. Designed to entertain whilst offering comfortable family living this home presents an array of distinguished spaces across three levels.

Ground Level Offers:

- Opulent formal lounge area
- Gorgeous Main bathroom
- Large laundry with plenty of storage and bench space
- Gorgeous open plan living, dining and kitchen area

The light filled living area is heart of the home, showcasing the beautiful backyard and pool area through its French doors

- The sophisticated kitchen is dressed in 40mm stone offering integrated & quality appliances, gas cooking, breakfast bar and butlers pantry offering additional sink and plenty of pantry space
- The spacious backyard offers a plenty of yard space, an in-ground salt water swimming pool which is surrounded by a covered outdoor dining area and lounge area offering an integrated BBQ, sink, room for a bar fridge and additional cupboard space

Level 1 offers:

- Four generous bedrooms all with built in wardrobes
- Master bedroom offers ultra modern bathroom, walk-in wardrobe and private balcony offering gorgeous district views
- Grand main bathroom room with bathtub
- Seating area and office space

Basement Level Offers:

- Plenty of storage space
- Garage space for up to 4 vehicles

Overall Features:

- French provincial theme carried throughout the design
- Brushed brass fittings and fixtures throughout
- Gorgeously landscaped throughout
- Ducted AC throughout
- Ceilings fan in alfresco
- Gorgeous use of skylights and oversized windows to maximise natural light
- Concrete slab on ground floor
- Video intercom and security alarm
- Blinds and curtains throughout
- Gorgeous array of pendants and wall lights throughout
- 600 x 1200 porcelain tiles used on ground floor
- Natural stone used in outdoor areas
- Timber floorboards upstairs

Conveniently located close to Condell Park shops, local schools, cafes, public transport, other amenities and major motorways. We highly recommend you come out to inspect to really appreciate what this home has to offer.

All Offers In By 13th July 2024 Contact Joshua Nassif | 0499 771 178