

22 Victoria Street, Clayfield, Qld 4011



House For Sale

Wednesday, 10 July 2024

22 Victoria Street, Clayfield, Qld 4011

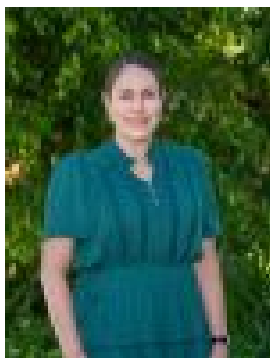
Bedrooms: 5

Bathrooms: 3

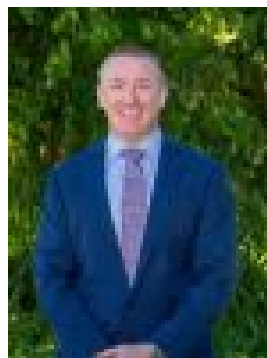
Parkings: 2

Area: 260 m2

Type: House



Chrese Morley
0412586994



Keith Mahon

Expressions of Interest

Off the back of their most recent luxury developments at 21 Mayfield St Ascot and 96 Towers St Ascot; Queensland Property Developments are proud to present their latest masterpieces in Clayfield. This carefully crafted residence has been creatively designed to encompass low maintenance, inner-city living with a stylish and spacious lifestyle. On the lower level you will find a 5th bedroom or home office if you prefer, accompanied by full bathroom facilities. With engineered timber flooring, the downstairs open plan living and dining flows seamlessly through framed glass doors out to the outdoor alfresco space with BBQ facilities in-built. The stylish kitchen with stone benchtops, under-bench seating, feature lighting, built-in dishwasher, walk-in butler's pantry and muted colour palette is the hub of the home and enjoys wonderful natural light that beautifully fills the room. Close the electric window blinds and curtains if you prefer a darkened room. Downstairs also has a large, separate laundry room with direct access externally to the drying area. The upper level boasts a large primary bedroom, featuring a luxurious ensuite, a spacious walk-in wardrobe and a private balcony. An additional 3 Queen sized bedrooms are flanked by another lounge room and study nook as well as a family bathroom with signature bathtub. Other Quality inclusions - Fully integrated air-conditioning with (mobile phone control) Alarm system and internal video intercom security (mobile phone control) Ceiling fans NBN and Wifi boosters Custom blinds and curtains throughout Separate study nook Additional family room upstairs Juliet balcony off primary room Remote access, double car garage with epoxy flooring Built-in storage in garage Built in BBQ facilities Pedestrian access with security gate and intercom Beautifully landscaped for low maintenance gardening New construction 2024 Situated within the Eagle Junction State School catchment and a 2-minute stroll to Clayfield College, these centrally located homes are in the heart of the Clayfield restaurant hub with both bus and rail transport at your fingertips. Located approx 6kms from the Brisbane CBD and only minutes by car to Brisbane International and Domestic airports, Clayfield is a Blue-Chip suburb in Brisbane's Inner-North. Please contact Chrese Morley or Keith Mahon for additional information on these new homes.