

225 Thomas Road, Humpty Doo, NT 0836



House For Sale

Sunday, 23 June 2024

225 Thomas Road, Humpty Doo, NT 0836

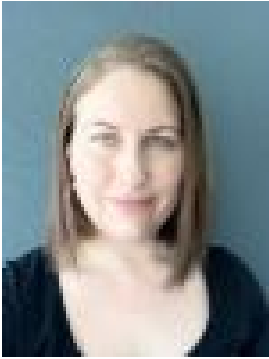
Bedrooms: 2

Bathrooms: 1

Parkings: 2

Area: 2 m2

Type: House



Nuriye Piening
0429826650

\$618,000

Nestled amidst Humpty Doo's rural landscape, 225 Thomas Road offers an idyllic retreat for families or couples seeking the serenity of country living with modern comforts. This contemporary two-bedroom abode presents a harmonious blend of open-plan living, with a spacious living, dining, and kitchen area serving as the heart of the home. Tastefully tiled throughout, the house remains cool and inviting with both air conditioning and ceiling fans, ensuring year-round comfort in the Northern Territory's tropical climate. The eco-conscious will be pleased to discover solar hot water facilities, reducing energy consumption and utility costs. Security and privacy are effortlessly provided by an electric gate at the property's entrance, which opens onto a well-maintained gravel driveway leading to the residence. Occupying an expansive 5 acres, the outdoor space boasts an established and well-maintained garden under manual reticulation of 6 stations, providing a picturesque setting for relaxation and family activities. An above-ground swimming pool invites residents to cool off amidst the peace of their own private sanctuary. For those with a business or in need of ample storage, a large shed/workshop satisfies all conceivable requirements. Additionally, generator backup power ensures uninterrupted comfort and convenience. With parking for multiple vehicles, this property is well-suited for hosting guests or accommodating a family with multiple drivers. Embrace a life of bliss and modern living at 225 Thomas Road—your new slice of rural paradise.

Features:- Two bedrooms- Solar hot water- 5Kva Diesel Gen set which runs the house - Bore at 1.5LPS- Large shed / workshop with roller door access- 2 bay carport attached to shed- Electric gate- Landscaped gardens- Fenced natural bushland- 4 acres of improved pasture - Manual reticulation around the house with 6 stations in use

Close By:- 9 minutes to Humpty Doo Village Green- 8 minutes to Humpty Doo Tavern- 9 minutes to Taminmin College- 8 minutes to Humpty Doo Gold Course- 14 minutes to Coolalinga Central- 20 minutes to Palmerston Regional Hospital

House Built: 2005
Shed Built: 2011
Zone: RL (Rural Living)