

24 Goundry Drive, Holmview, Qld 4207

House For Sale

Monday, 8 July 2024



24 Goundry Drive, Holmview, Qld 4207

Bedrooms: 4

Bathrooms: 2

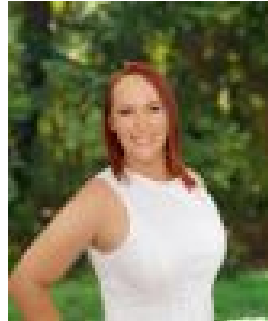
Parkings: 2

Area: 435 m2

Type: House



Eiles Brittany Hunt
0739103776



Niki Blenkins
0421229033

MID TO HIGH \$600,000's

Discover the perfect blend of comfort, style, and convenience at 24 Goundry Drive, Holmview. This delightful family home, situated in the sought-after Alberi Park Estate, offers a thoughtful layout designed to cater to the modern family's needs. Stepping inside, the thoughtful floorplan provides bedrooms appointed away from the open plan living area. Offering three bedrooms with a study at the front of the home, this adaptable space can serve as a guest bedroom or peaceful work from home space. The open plan kitchen and lounge allow for connection and seamless integration with the rear entertaining area, which makes hosting family and friends a breeze. Whether you're a first-time homebuyer or an astute investor, this property promises an exceptional lifestyle and return on investment in a thriving community.

INSIDE: - Three generously sized bedrooms with built-in robes - Master bedroom featuring an ensuite for added privacy - Separate study/office or potential fourth bedroom at the front of the house - Modern kitchen with dishwasher, gas stove, breakfast bar, and ample storage - Open-plan living and dining area, perfect for family gatherings - Air-conditioning and ceiling fan in the lounge room for year-round comfort - Main bathroom with bathtub and separate toilet - Good-sized laundry with external access - Ample linen and general storage throughout - Window and door security screens for peace of mind - Double lock-up garage with internal access

OUTSIDE: - Stylish and timeless façade with covered portico entry - Low-maintenance 435m² block with side access - Fully fenced backyard, ideal for kids and pets - Low-maintenance lawn and gardens - Rainwater tank for sustainable living

Holmview is a family-friendly suburb offering unparalleled convenience and a relaxed lifestyle. Situated close to Holmview Central Shopping Centre, Edens Landing and Holmview train stations, and prestigious schools like Canterbury College, the accessibility of this property is simply outstanding. Easy access to the M1 motorway means the commute north to Brisbane or south to the Gold Coast is seamless. Perfect for those who want the best of both worlds for vibrant city living and sun filled weekend getaways.

- 4 min drive to Holmview Central Shopping Centre - 4 min drive to Woolworths Holmview - 4 min drive to Edens Landing State School - 5 min drive to Holmview station - 6 min drive to Windaroo Valley State High School - 6 min drive to Edens Landing Train Station - 6 min drive to Canterbury College - 13 min drive to Logan Hospital - 30 min drive to Brisbane CBD - 40 min drive to Gold Coast

Now is the chance to harness the allure for this sought-after locale. Get in touch with The Hunt Team today and open the door to better living.