

24 Walara Drive, Mount Martha, Vic 3934

Sold House

Friday, 1 September 2023



24 Walara Drive, Mount Martha, Vic 3934

Bedrooms: 5

Bathrooms: 4

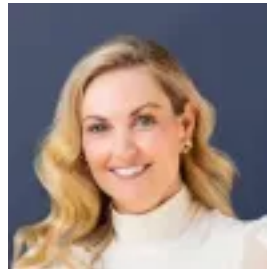
Parkings: 3

Area: 985 m2

Type: House



Sam Danckert
0359046446



Amber Sealey
0359046446

\$2,850,000

Welcome to your dream family home! Designed by the renowned Rod Hannah, this magnificent property offers an unparalleled living experience. Boasting five spacious bedrooms and four elegant bathrooms, with self-contained accommodation, it provides the perfect solution for multigenerational living, a home office, or a teenage retreat. This sensational home also offers three-car accommodation, allowing ample room for the whole family to enjoy. Whether you're a culinary enthusiast or simply love to entertain, this chef-style kitchen and alfresco area will exceed your expectations. Embrace the joy of cooking, dining, and entertaining in a home that truly understands your lifestyle. The cleverly zoned living spaces ensure privacy and comfort for everyone. Whether you're seeking a quiet retreat in the study or enjoying quality time together in the family room, there is a space to suit every mood and occasion. Breathtaking panoramic views are truly the crowning jewel of this property. Gaze across the stunning Port Phillip Bay, where the sparkling waters meet the horizon. Marvel at the majestic Dandenong Ranges, a picturesque backdrop that sets the stage for peaceful living. As the sun sets, watch in awe as the Melbourne City skyline comes alive, illuminating the night sky with its vibrant energy. This family home is more than just a house; it's a sanctuary that combines comfort, elegance, and natural beauty. Don't miss the opportunity to make this extraordinary property your own and create lasting memories with your loved ones. Embrace the lifestyle you've always dreamed of—come and experience the ultimate in luxury living today!

Property Specifications- 1290sqm* block- Gas Fireplace- Heating & Cooling throughout- Rod Hannah design- Swimming pool with solar and gas heating- Double remote garage with additional off street parking- 10kw Solar Power- World class bay views*measurements are indicative only