

25 Cloverfields Crescent, Epsom, Vic 3551

House For Sale

Wednesday, 19 June 2024

25 Cloverfields Crescent, Epsom, Vic 3551

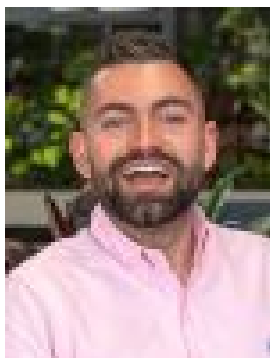
Bedrooms: 4

Bathrooms: 2

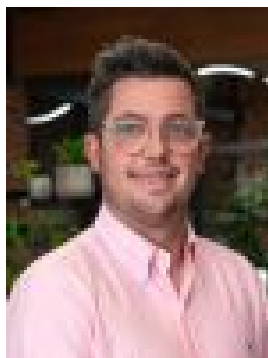
Parkings: 2

Area: 576 m2

Type: House



Sacha Dale
0407899066



Dale Bish
0457492032

\$640,000 - \$680,000

Welcome to 25 Cloverfields Crescent, Epsom—a modern family haven offering a blend of space, functionality, and comfort in a prime location. This beautifully designed home features a functional floor plan with dual living areas, perfect for families seeking both communal and private spaces. The open-plan kitchen, living, and dining areas are generously sized, creating an inviting atmosphere for gatherings and everyday living. The modern kitchen is a dream, boasting stone benchtops, 900mm appliances, and a great size walk-in pantry. The master bedroom is a true retreat, complete with a walk-in robe and ensuite. Bedrooms 2, 3, and 4 all feature built-in robes, providing ample storage for the whole family. The main bathroom includes a separate toilet, ensuring convenience for busy mornings. Additional storage throughout the home ensures everything has its place, maintaining the neat and tidy presentation. Enjoy year-round comfort with ducted gas heating and evaporative cooling, while the solar panels provide an eco-friendly energy solution. The double lock-up garage offers secure parking, with convenient access to the backyard. The separate laundry adds to the home's practical features. Step outside to a fantastic backyard designed for entertaining. The double alfresco areas provide ample space for outdoor dining and relaxation, while the garden shed offers extra storage for your gardening tools. The yard is perfect for children to play or for hosting BBQs with friends and family. Situated in a quiet spot in Epsom, this home is just a short walk from Epsom Village, providing easy access to shops, cafes, and amenities. The location is truly unbeatable, offering a peaceful lifestyle while being close to everything you need. Additional highlights include:

- Lounge off the entry
- Wide hallways adding to the spacious feel
- Solar panels for energy efficiency
- Access through the garage to the yard

Don't miss the opportunity to make 25 Cloverfields Crescent your new family home. It's neat, tidy, and ready for you to move in and start creating wonderful memories. Contact us today to arrange a viewing!