

25 Lawrence Way, Samson, WA, 6163

MINT
REAL ESTATE

House For Sale

Saturday, 14 September 2024

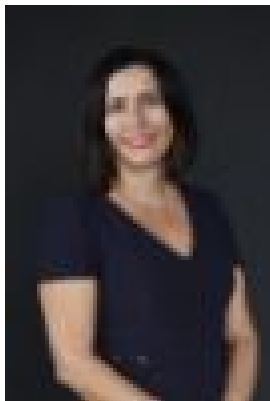
25 Lawrence Way, Samson, WA, 6163

Bedrooms: 4

Bathrooms: 2

Parkings: 2

Type: House



Marisa Rifici
0432729620

You're Invited to a CHIC EUROPEAN CLASSIC

Opportunities like this are truly special! Nestled on a sprawling 757m² block, this original 1979 solid-built home exudes timeless elegance and masterful craftsmanship. Every detail, from the ornate architecture to the meticulously maintained interiors, has been lovingly cared for, making it the perfect canvas for your personal touch.

Step inside and discover four spacious bedrooms, a pristine bathroom, and both formal and family living areas, complete with a built-in bar perfect for entertaining. The expansive kitchen and dining area is ideal for creating culinary delights, while the huge laundry offers convenience with its large laundry basin, toilet, and shower.

The outdoor living space is where memories are made. A generous entertaining area invites you to host summer barbecues and lively gatherings with family and friends.

Parking is a breeze with a double lockup garage, an undercover carport with a gated entrance, and additional secure space for a boat or caravan. Plus, two front entrances, a garden shed, and so much more!

This delightful home is ready for you to make it your own. Don't miss out on this extraordinary opportunity!

Additional features:

- Reverse cycle air conditioning in the kitchen, master bedroom & bedroom 2
- Freestanding wood fire ducted to the kitchen/dining for extra warmth
- Solar panels 5KW (24 panels)
- Heat pump for pool
- Reticulated lawn & garden beds
- Security Cameras
- Extra parking for caravan / boat or trailer

Rates & Local Information

Water Rates: \$1,232.03 (2022/23)

City of Fremantle Council Rates: \$2,225.21(2024/25)

Zoning: R15

Primary School Catchment: Samson Primary School

Secondary School Catchment: Fremantle College

*PLEASE NOTE: While every effort has been made to ensure the given information is correct at the time of listing, this information is provided for reference only and is subject to change. It is recommended that you conduct your own due diligence before making any decisions based on this information.