

25 Simone Crescent, Casula, NSW 2170

House For Sale

Tuesday, 2 July 2024

25 Simone Crescent, Casula, NSW 2170

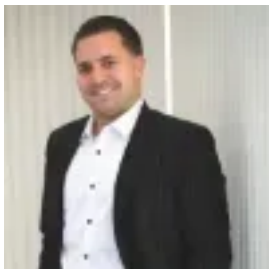
Bedrooms: 3

Bathrooms: 3

Parkings: 2

Area: 920 m2

Type: House



Mitchell Angel
0246475933

AUCTION

A rare offering, Real Property Specialists are proud to present 25 Simone Crescent, Casula to the market. An exceptionally well built, double brick construction home that sits proudly on an R4 zoned double block of 920sqm, with an impressive 25.8m frontage. With a commanding street appeal, curved driveway & a wide front verandah, makes for a wonderful first impression as you relax in the north-facing sunlight and survey the lush front garden. Property Highlights: + three bedroom home, main with ensuite & walk in robe + separate office/potential fourth bedroom + large lounge room with gas fire place, built in bar & servery through to the kitchen + formal dining room with easy access to the kitchen + renovated kitchen with quality fixtures, including granite bench tops + renovated bathroom with floor to ceiling tiles, granite vanity top, separate bath & corner shower + secondary dining/family room flows freely to the generous & private outdoor entertaining area + oversized garage with workshop & an abundance of external storage + tiled floors throughout, ducted air conditioning & gas heating + ornate cornices provide character & charm of a bygone era + third bathroom off the oversized laundry, perfect for cleaning off after tinkering outside. Location Highlights: + 300m to Jardine Park + 400m to Casula Mall + 1km to All Saints Catholic College + 1.1km to Casula Public School + 1.5km to Casula Powerhouse Arts Centre + 1.7km to Casula High School + 3.7km to Amity College, Prestons* Please note, all distances above are approximate only. For further information on this exceptional opportunity or to arrange an inspection, be sure to contact your Real Property Specialist, Mitchell Angel on 0466 269 487.* Real Property Specialists believe that all the information contained herein is true and correct to the best of our ability however we encourage all interested parties to carry out their own enquiries.