

26 Hives Cl, North Boambee Valley, NSW, 2450

House For Sale

Tuesday, 20 August 2024

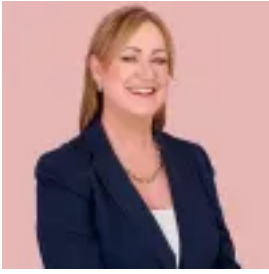
26 Hives Cl, North Boambee Valley, NSW, 2450

Bedrooms: 5

Bathrooms: 3

Parkings: 4

Type: House



Aleta Stephens

Generous in Size, Generous in Inclusions!

From the moment you pull up this home has a lovely street presence, is surrounded by quality homes in a quiet cul-de-sac.

Recently renovated this home offers five huge bedrooms, the master with large walk-in robe and lovely ensuite. The master also leads out on to the balcony that overlooks the treed koala reserve to the rear.

All areas of this home are very generous, the main lounge opens to the front balcony, the family room to the back balcony and the huge rumpus leads out onto the massive deck to the rear of the home....family gatherings here will be a must.

The kitchen is light filled with gas cooktop, electric oven, dishwasher and is central to both upstairs living areas and to the dining area. It is a great space for meal preparation and to oversee the kid's doing homework at the servery area. You can also enjoy both air conditioning comfort and warmth from the fireplace in these upstairs areas.

The home offers side access for a camper or boat and with minimal maintenance garden areas surrounding the home. Down the back you have a large fire pit area that has power and access to the garden shed. There is also water here if someone wanted to put a powder room there. The yard also has access from the reserve at the rear and pets will enjoy the shaded area under the deck.

This design would also allow for separate living opportunities STCA with the downstairs area having side access and its own ensuite bathroom along with room for a kitchenette. The garage is remote four car with room for a motorbike/workshop. It also has an abundance of under house storage for tools, push bikes etc.

If you are a big family needing space for everyone, an owner occupier wanting to earn some extra income than look no further, this house will not disappoint. Call Aleta or Whitney today to arrange your private viewing.

Year Built: 1990

Rates: \$3,107.86

School Catchment: Narranga Public School & Orara High School