

26 Taplow Street, Waterford West, Qld 4133



House For Rent

Wednesday, 3 July 2024

26 Taplow Street, Waterford West, Qld 4133

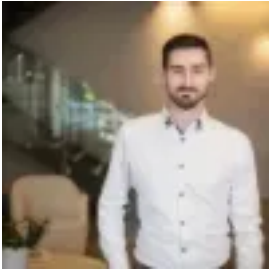
Bedrooms: 3

Bathrooms: 1

Parkings: 2

Area: 817 m2

Type: House



Anthony Lincoln
0731333808

\$520 pw

Please click "GET IN TOUCH" to register for an inspection or to request an application. We look forward to seeing you! This spacious family home in Waterford West sits on a large, 817m² corner block and boasts a huge covered patio for easy entertaining, plus two covered car spaces inside the fence line. - Large, 817m² corner block - Freshly painted - Brand new carpets - Fully fenced back yard - Garden shed - Two covered carports - Large covered patio - Large carpeted lounge - Large dining space - Kitchen with ample bench and storage space - Mud room - Separate laundry - Bathroom with bath tub and separate toilet - 3 x bedrooms, 2 which include built in wardrobes Don't miss your chance to apply! Register online today for an inspection or call our team on 07) 3133 3808! Disclaimer: Liability Excluded The following disclaimer is applicable to all information provided in this advertisement: All details, descriptions, and representations provided in this advertisement are believed to be accurate and reliable at the time of publishing. However, we make no warranties or guarantees as to the completeness or accuracy of the information presented. Prospective tenants are advised to conduct their own thorough inspections and verifications regarding the property's condition, features, dimensions, suitability, and any other relevant aspects before making any decisions. We expressly exclude any liability for omissions, errors, or inaccuracies in the advertisement content. By responding to this advertisement or engaging with our services, you acknowledge that you have read and understood this disclaimer and agree to release us from all liability associated with it. Please note that images used in advertising materials may be digitally enhanced for illustrative purposes only and should not be solely relied upon when assessing the property's condition or features