

**27-29 Romaine Street, Blackheath, NSW 2785**



**House For Sale**

Tuesday, 25 June 2024

27-29 Romaine Street, Blackheath, NSW 2785

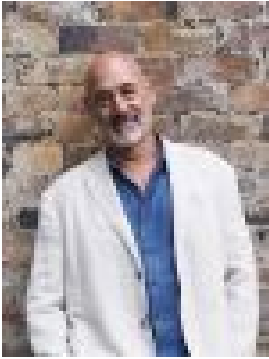
**Bedrooms: 4**

**Bathrooms: 2**

**Parkings: 2**

**Area: 1500 m2**

**Type: House**



Lewis Thyer  
0430043806



Adele Colman  
0414876211

**\$1,450,000 - \$1,550,000**

Designed by Sydney based heritage architect Margaret Des-Grand, 'Icomb' is a rare Mid-Century gem. Set high on the hill at the top of Romaine Street, this elegant home sits comfortably in the mountains landscape. Standing in the street the first thing to draw your attention is the construction, many Mid-Century homes gravitated towards lighter construction materials such as timber frame with fibro-cement infills which is terrific if you live on the beach, not so great if you are 1100 metres above sea-level! Not so for Icomb, the architect very sensibly chose full brick, but the brick has been cleverly utilised where the insulating qualities are needed without compromising the light and sundrenched characteristics that make a mid-Century home such a desirable place to be. Being perched up high with its intriguing blank street facade the house looks like a modern day medieval keep with only one entry door to take you to the central private court-yard. This is a terrific place to be, north facing, sheltered and drenched with winter sun, what a lovely micro-climate to enjoy those sunny cool and crisp winter days that are so prevalent in the Blackheath winters. To the left of this entry is a wall of cedar framed floor to ceiling windows which make up the North face of the house, again, they bring all that sunshine into the main living room which is generously proportioned. Whilst contemporary in design, the house exudes a timeless craftsman quality, in its bold robust brick detailing contrasted with Australian timbers including 'Brushbox' floors and high ceilings of selected Tasmanian Oak. The now rare Tasmanian timber 'Myrtle Beech' lines the fireplace mantle, the stairs to the bedrooms and the floor-to ceiling see through book cases. The house has gas central heating and a stunning brick fire place that forms the focus of the house. The main house bedrooms are set a few steps above the living spaces giving added privacy. Two of the three bedrooms have built in wardrobes. The current owners have cherished this home, and have added a fun and funky parents retreat on the far side of the courtyard, this 'Pod' includes a walk in robe and a roomy bathroom as well as a spacious north facing master bedroom. In the original house the kitchen and bathroom have also had a fresh makeover that modernise both rooms but cleverly mirror the vintage style of the original home. The house and the gardens straddle two land titles, with the landscaping being well established and private with many rare exotic plants. The design of the courtyard amplifies the feeling of being in a leafy paradise with winding paths taking the adventurer to the many levels and garden 'Rooms' of this lovely and rare property. Set at the highest point of the property is the Studio, a space designed for its even light and utilised as a creative place for artist Harold David, previously a successful photographer and now a sought after emerging artist specializing in large scale canvas work that are exhibited by a select handful of galleriests. So come have a look, this is a one off, a rare home with unmatched versatility and will not last long as it is so special. • 1500m<sup>2</sup> on two titles • Stunning Mid-Century Margaret Le-Grand design • Quiet and elevated position • Ducted Central Heating • Artists Studio