

**27 Bakers Road, Church Point, NSW, 2105**



**House For Sale**

Friday, 16 August 2024

27 Bakers Road, Church Point, NSW, 2105

**Bedrooms: 4**

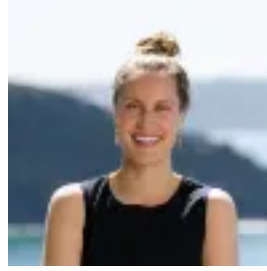
**Bathrooms: 3**

**Parkings: 2**

**Type: House**



Noel Nicholson  
0299742300



Tara Jaijee  
0299742300

## **Privacy, style and Pittwater views; the perfect family retreat**

This exquisite Church Point residence offers wide views of Pittwater, with both seclusion and privacy at its heart. Spacious and well appointed, this family retreat is framed by immaculate manicured gardens and sparkling pool, reminiscent of a grand estate.

Easily accessed by a shared private driveway and set over two levels, the ground floor offers a choice of spaces for both entertaining and separation. The large lounge area with timber-panelled pitched ceiling is complete with gas fireplace and large glass sliding doors for maximum air flow opening to the front entertaining desk to soak in the Pittwater vistas. This level further contains the kitchen and adjacent dining area, study, large family room, balcony, laundry and full bathroom.

The first floor offers the accommodation, with three bedrooms, home office, bathroom and the large master bedroom offers a walk-in robe and en-suite.

- + Quiet and incredibly private Church Point setting with wide sweeping views of Pittwater
- + Intuitively designed floor plan; well-zoned layout for families
- + Outstanding manicured gardens framing the entire home, giving an estate-like feel across 1,139 sqm
- + Soaring ceilings, hardwood floors, louvre windows and sliding doors
- + Modern kitchen features clean lines, large pantry, stainless steel appliances and Corian and stainless steel bench spaces
- + Rear elevated and covered entertaining area with built-in BBQ
- + Sparkling pool overlooking Pittwater
- + Three bedrooms all with BIRs, master includes walk-in-robe and en-suite
- + Two dedicated studies, one with full length built-in desk
- + Gas fireplace, air-conditioning and ceiling fans throughout for year round comfort
- + Double lock up garage, ample storage throughout
- + Shared driveway with 27a, also offered additional shared parking

This well appointed residence is located a short walk to cafes, tennis courts, off-the-lead dog parks, Bayview Golf Course, top schools and moments to Mona Vale Village. Situated one hour from Sydney CBD by car or B-Line Express Bus, you are also close to national parks and beaches to explore.

Inspection by private appointment. Please contact Noel Nicholson on 0411 884 290 or Tara Jaijee on 0423 737 826.