

# 27 Corella Crescent, Narara, NSW, 2250

## House For Sale

Wednesday, 14 August 2024



27 Corella Crescent, Narara, NSW, 2250

**Bedrooms: 6**

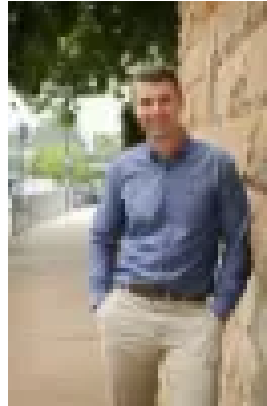
**Bathrooms: 3**

**Parkings: 3**

**Type: House**



Ben Cheverall  
0415166511



Richard Faulkner  
0243021764

## Spacious Family Home in Prime Location

Imagine a home where sunlight pours into every corner, nestled on a sprawling 968 sqm block in one of the most sought-after streets. A place where privacy meets convenience, with shops, top-notch schools, and easy transport all within arm's reach. This six-bedroom sanctuary, complete with a study, sprawls across two expansive levels, offering multiple living and dining areas that invite the whole family to create memories together.

As you step through the front door, the possibilities unfold. The ground floor welcomes you with a spacious lounge, media, and family rooms, all bathed in natural light. Each space flows effortlessly into the next, with meals and dining areas offering flexibility for every occasion. Need a seventh bedroom? The study is ready to transform. Rich hardwood timber flooring and plush modern carpet guide you through these inviting rooms, leading you to a breathtaking covered entertainment deck. Here, the fully fenced backyard promises endless fun, especially as the beautiful inground pool glistens under the warm sun—a perfect escape as the seasons turn.

At the heart of this home lies the chef's dream kitchen, a true gathering spot for family and friends. With ample bench and cupboard space, a center island for casual chats, and a grand 900mm gas oven that beckons the home cook, every meal becomes a celebration. Granite benchtops add a touch of elegance, complemented by a dishwasher and a dedicated 18-bottle wine storage that awaits your finest selections.

Upstairs, the six bedrooms offer a retreat for each family member, each with built-in robes for added convenience. The master suite, however, is a world of its own—a grand haven with a spacious ensuite, both built-in and walk-in robes. This is more than just a bedroom; it's the ultimate escape within your home.

Additional features enhance this property's appeal: ducted and reverse cycle air conditioning systems, solar, natural gas heating points, and a garden shed for all your outdoor needs. The triple lock-up garage, with remote entry and drive-through access, ensures convenience, while the landscaped gardens wrap the home in natural beauty.

For commuters, the M1 Motorway is just a short drive away, and easy access to Narara or Gosford train stations makes getting around a breeze. The vibrant Gosford waterfront and CBD are also just moments away, adding the final touch to this perfect package. This is not just a home; it's where your next chapter begins.

Email the agent for a detailed property eBook. If you don't receive a response within 60 seconds, please check your junk mail!

**DISCLAIMER:** This advertisement contains information provided by third parties. While all care is taken to ensure otherwise Gittoes Leaders In Property does not make any representation as to the accuracy of the information contained in the advertisement, nor does it accept any responsibility or liability, and recommends that any client makes their own investigations and enquiries. All images are indicative of the property only.