

27 Mansell Drive, Warrnambool, Vic 3280

Gleeson.

House For Sale

Tuesday, 2 July 2024

27 Mansell Drive, Warrnambool, Vic 3280

Bedrooms: 3

Bathrooms: 2

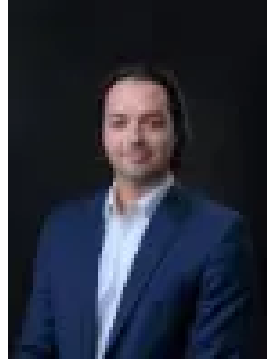
Parkings: 1

Area: 556 m2

Type: House



Jeremy Gleeson
0431767855



Jacob Gibbs
0402513322

\$650,000 - \$700,000

Welcome to 27 Mansell Drive, a beautifully presented, modern and locally custom-built 3-bedroom 2-bathroom home. This recently built home has got wow-factor. Offering a perfect blend of modern and functional living, you won't be disappointed. Step inside the house via the timber-framed glass front door and be greeted by the expansive and light-filled living area. The street outlook is complemented by large double-glazed windows, roller blinds and sheer curtains. The adjoining kitchen and dining area is locally built, and completely original. Including matte-black cabinetry, black fittings, timber features, a window splash-back, stone top and timber island bench and of course the modern-day essentials: dishwasher, A/C split system, gas top burner and electric oven. This space is perfect for entertaining friends and family, providing a retreat for relaxing evenings. Beyond the living area, the three bedrooms and the outdoor undercover decking area are just as considered. With access to the outdoor area from the living area and the master bedroom, it is designed to be perfect for the Southwest climate. Protected from the elements from the east, south and west, you can spend time outside in your north-facing courtyard and be mostly protected from the seasonal wind! The master bedroom is a true sanctuary, complete with a modern ensuite with dual shower heads, niches and a walk-in robe and A/C split system. Two additional bedrooms are generously sized and feature built-in robes, offering plenty of storage space. The main bathroom is stylishly designed and includes a bathtub for ultimate relaxation. Every member of the family will have their own private retreat to unwind and recharge. Outside, you will be surprised at the space. The low maintenance yard is grassed and landscaped with a garden shed, enough space to play and enjoy and to keep manicured. Located in a highly convenient area, this property is within close proximity to schools, parks, shops, and public transport. Enjoy having everything you need just moments away, while still being able to retreat to the peace and tranquility of your own home. Don't miss out on the opportunity to make this stunning family home yours. Contact us today to arrange a private inspection and start enjoying the lifestyle you deserve.