

**27 Mildura Crescent, Endeavour Hills, Vic 3802**

**CENTURY 21**

**House For Sale**

Sunday, 23 June 2024

27 Mildura Crescent, Endeavour Hills, Vic 3802

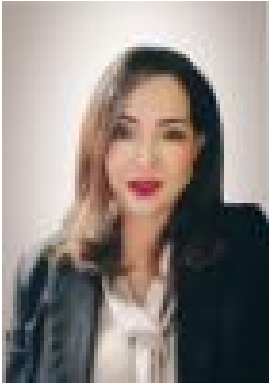
**Bedrooms: 3**

**Bathrooms: 2**

**Parkings: 3**

**Area: 613 m2**

**Type: House**



Theresa Huynh  
0395477222



Bon Ta  
0395477222

## **\$780,000 to \$858,000**

Located within easy walking distance of Endeavour Hills shopping centre yet in a quiet street this well-maintained brick veneer three-bedroom home offers great value. Featuring a master bedroom with ensuite, bedroom 2 with a split system AC unit and all three carpeted bedrooms feature built-in-robos. Other amenities include the family bathroom with separate bath, vanity and shower, a separate toilet and a separate laundry with direct access to the side yard. Other features include a good-sized foyer adjacent to the formal lounge complete with split system cooling unit, an open plan kitchen and a family room the spans the rear of the home. The well-proportioned kitchen offers plenty of storage cupboards, a five-burner gas cooktop on a stone benchtop with an easy clean splashback. Extra bench space is provided by an island bench with matching stone BT with room for casual meals. Additional space is available in the kitchen area for a dining table or extra storage cupboards. The kitchen opens to a large extension that spans the width of the home providing plenty of space for family activities with room for a large dining table, extra lounge area and a pool-table or table-tennis table if you prefer. This room has access to the tandem double garage and the rear yard with its trees, water storage tanks and garden area. Conveniently located close to Endeavour Hills shopping centre with primary schools and a secondary school all within a 2 Km radius this home has plenty of family appeal. Currently leased to good tenants at \$1,999 pcm. Endeavour Hills is on the Eastern side of the Monash freeway just a few minutes' drive from Dandenong CBD, Dandenong Hospital, Chisholm University and 38 KM from Melbourne CBD. Features: Ducted Heating 2 Split-system AC units (1 cold only) Timber Floors Projector and Screen Double garage, (Tandem) Currently Leased at \$1999 pcm.