

27 Primula Street, Lindfield, NSW 2070

STONE

House For Sale

Wednesday, 10 July 2024

27 Primula Street, Lindfield, NSW 2070

Bedrooms: 5

Bathrooms: 5

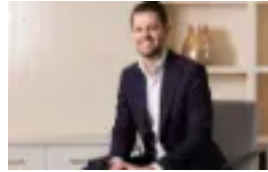
Parkings: 4

Area: 835 m2

Type: House



Steven Kourdis
0402555675



Matt Payne
0290953500

Auction: Saturday 10th August Onsite

Enter a world of pure indulgence in this brand-new custom designed entertainer, delivering unparalleled luxury within grand scale proportions and the ease of smart home automation. This home will never fail to impress, with a soaring marble entry and spectacular marble staircase connecting all three levels of the palatial layout. Proudly constructed by Spencer Home and architecturally designed by Notch Design Studio. Paramount quality echoes throughout the home. Miele and Robam feature in the marble kitchen that includes a butler's pantry/caterer's kitchen. Five sumptuous bedrooms provide for all ages and stages of family life with a choice of master suites for multi-gen use, an array of elegantly appointed bathrooms and ensuites with heated floors, and custom robes and dressing room. Three living areas are bolstered by covered outdoor entertaining, a semi-alfresco games room, a gym, and a fully mosaic tiled pool and spa to delight your family and friends.- Brand-new home with approx 597sqm layout on approx 834sqm land, double brick and concrete slab build- Richly veined marble entry and spectacular spiral staircase connects 3 levels- Custom marble kitchen, Zip tap, pot tap, integrated Miele fridges + freezers- Miele + Robam: 2 gas cooktops, 2 ovens, microwave, dishwasher, butler's pantry- Sumptuous open living and dining with leafy green background of distant trees- Upstairs retreat flanked by bedrooms is a great private space for families- Downstairs family room opens to covered outdoor entertaining and pool- Bathrooms and ensuites to every level of the home brings multi-gen appeal- Heated bathroom floors, illuminated mirrors, luxury tiles, concealed cisterns- Deluxe bedrooms with custom robes, prime bedroom with dressing room- Covered outdoor entertaining areas, gym, semi-alfresco games room, wet bars- Fully mosaic tiled swimming pool and separate spa- Smart home automation, lift, zoned ducted reverse air con, open fireplace- Security system, alarm, video intercom, wine cellar-tasting room, home office- Double lock up garage with internal access, auto gate and door, on-site parking- Beaumont Road Public & Killara High catchment zones, bus to Killara High and Lindfield Station, close to Holy Family & Highfields Prep