

**28 Dorland Street, Schofields, NSW 2762**



**Sold House**

Friday, 22 March 2024

28 Dorland Street, Schofields, NSW 2762

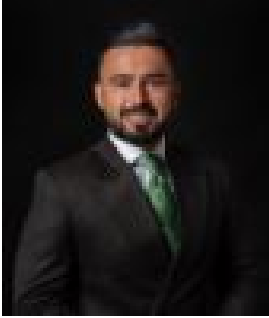
**Bedrooms: 5**

**Bathrooms: 2**

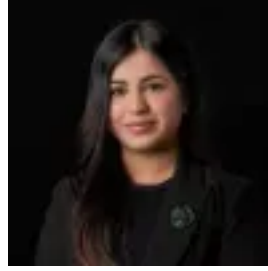
**Parkings: 1**

**Area: 300 m2**

**Type: House**



Amit Kumar  
0288964336



Siya Sachdeva  
0288964336

**\$1,223,000**

Superbly positioned in one of the most sought-after pockets of Schofields, nestled within the ever-popular Akuna Vista, is a home designed to cater to every aspect of modern family living. This spacious residence offers an inviting and comfortable lifestyle in a growing neighbourhood, ideal for multigenerational or large families. Bringing together the perfect blend of comfort and convenience, this versatile home boasts a sheer sense of space for you and your loved ones to enjoy. The captivating layout of the home offers an open plan living, dining and kitchen areas, providing a warm and inviting atmosphere for everyday living. Not to mention the formal living room upon entering the home. The property offers an abundance of natural light which flows effortlessly between spaces and out to the outdoor alfresco and spacious backyard. The well-appointed kitchen features quality stainless steel appliances, stone benchtops, a five-burner gas cooktop and 900mm oven, an island benchtop with an eat-in breakfast bar, a walk-in pantry and plenty of storage space. Accommodation consists of five well-sized bedrooms with the fifth bedroom located downstairs, perfect for multigenerational families, a guest bedroom or a home office. The master bedroom features a walk-in wardrobe as well as a private ensuite bathroom. All bathrooms also feature floor-to-ceiling tiles. Features you will love:- LED lights throughout the home- Ducted air conditioning- Floorboards downstairs- Remote-controlled single lock-up garage with internal access- Well-maintained front and back lawns- Land Size 300 sqm approx. Location Highlights:- 6 minutes drive to Schofields Train Station and Schofields Shopping Village - 10-minute drive to Tallawong Metro Station- Walking distance to the new Nirimba Fields Primary School - Minutes walk to the ever-popular Altrove Hilltop Park- Short walk to upcoming school, playfields and shopping centre in Akuna Vista - Short drive to Rouse Hill Town Centre- Easy access to M7 Motorway and Sydney CBD Disclaimer: All information contained herein is obtained from property owners or third-party sources which we believe are reliable. We have no reason to doubt its accuracy, however we cannot guarantee it. All interested person/s should rely on their own enquiries.