

28 Lynlee Crescent, Huntfield Heights, SA 5163

House For Rent

Wednesday, 10 July 2024

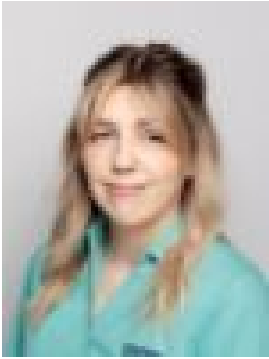
28 Lynlee Crescent, Huntfield Heights, SA 5163

Bedrooms: 3

Bathrooms: 1

Parkings: 2

Type: House



Emma Bridge
0883262008

\$500.00 Per Week

This lovely home is superbly located with convenient access to shops, schools and public transport and neatly and cleanly presented throughout. The lovely front gardens offer an appealing street scape and lead through to a driveway with ample parking, plus huge garage/workshop. The home offers a lovely relaxing and cosy formal lounge that flows through to a very tidy and functional kitchen with gas cooking and ample cupboard and workspace. Featuring three bedrooms, the main and second both with ceiling fans. A light, bright and clean bathroom is well positioned centrally to the home and is complete with bath and shower, the toilet is separate to the bathroom and there is a separate laundry. The rear garden features a large undercover verandah overlooking the yard that offers plenty of room for the kids and pets to play plus two garden sheds for all that handy storage space. With heating and cooling and a pet considered, this home is well worth inspection!

Features:- Three bedrooms- Ceiling fans to the main and second bedroom- Formal lounge- Informal family/meals area- Tidy kitchen with gas cooking- Heating and cooling - Bathroom with bath and shower - Separate toilet- Separate laundry - Private yard with huge verandah- Carport- Lock up garage / workshop- Two garden sheds- A pet may be considered

Disclaimer: All information contained in this advertisement has been gathered from sources we believe to be accurate, however, we cannot guarantee or give any warranty about the information provided and we accept no liability for any errors or omissions. Interested parties should seek independent advice before making any leasing decisions. RLA168235