

28 Palms Avenue, Berwick, Vic 3806



House For Sale

Wednesday, 24 January 2024

28 Palms Avenue, Berwick, Vic 3806

Bedrooms: 5

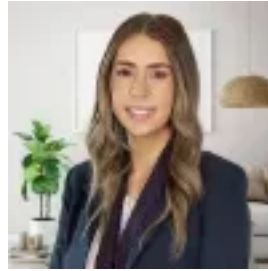
Bathrooms: 2

Parkings: 2

Type: House



Hayley Taufa
0397071400



Jess Hall
0397071400

\$1,200,000 - \$1,320,000

Welcome to 28 Palms Avenue, Berwick – where luxury and comfort unite in this beautiful home. Step inside to discover a thoughtfully designed space that seamlessly combines style and functionality. As you enter, to the left awaits a versatile 5th bedroom/study with BIR, providing flexibility to suit your lifestyle. Continue your journey to the formal lounge, a perfect retreat for intimate gatherings. The large laundry, boasting ample storage, and a convenient powder room add to the practicality of this home. The heart of the house unfolds into an open plan living, dining, and kitchen area. The kitchen is a culinary delight, equipped with quality appliances, stylish stone benchtops, and a walk-in pantry tailored to meet all your culinary needs. Step outside to the beautiful alfresco area, featuring electric blinds for year-round comfort – a perfect space to entertain or simply unwind. Venture upstairs to discover a spacious living room, setting the stage for relaxation and family time. The huge master suite beckons with a walk-in robe and ensuite, offering a private sanctuary. Three additional bedrooms, each with its own walk-in robe or built-in robe, ensure ample space for everyone. A well-appointed family bathroom, complete with a separate toilet, adds to the convenience. This grand home also features a double garage, high ceilings, providing both space and elegance. Experience the epitome of modern living at 28 Palms Avenue, where every detail has been meticulously crafted for your comfort and enjoyment. All of this is conveniently located in the Minta Estate overlooking the park, only a short distance to shops, cafes and restaurants, schools, local reserves and playgrounds, Monash Freeway and close to all that Berwick has to offer. Contact Hayley Taufa 0400 091 398 or Jess Hall 0433 820 847 for more information!